

## CD20 antibody [2H7] (Biotin)

Cat. No. GTX00466-02

宿主	Mouse
克隆	Monoclonal
同种型	IgG2b
实验应用	IHC-Fr, FCM, IP
种属反应	Human, Primate

引用文献 (1)

## 实验应用

## 应用说明

\*最佳稀释倍数与浓度应由研究人员确认

Suggested dilution	Recommended dilution
IHC-Fr	Assay dependent
FCM	Assay dependent
IP	Assay dependent

以下为常规应用缩写的中文注解

WB: 免疫印迹

ICC/IF: 细胞染色

IHC-P: 石蜡切片

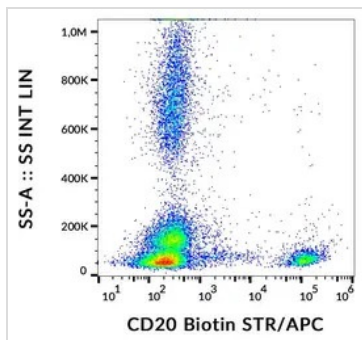
IHC-Fr: 冰冻切片

## 属性

形式	Liquid
存储溶液	PBS
保存剂	15mM Sodium azide
存放说明	Store as concentrated solution. Centrifuge briefly prior to opening vial. Store at 4°C. DO NOT FREEZE.
浓度	1 mg/ml (Please refer to the vial label for the specific concentration.)
偶联	Biotin The reagent is free of unconjugated biotin.
注意事项	仅供实验室使用。不适用于人类或动物的任何临床, 治疗或诊断用途。不适合动物或人类食用。

For full product information, images and publications, please visit our [website](#).

## 產品圖片

**GTX00466-02 FCM Image**

FACS analysis of human peripheral blood using GTX00466-02 CD20 antibody [2H7] (Biotin).



For full product information, images and publications, please visit our [website](#).