

## CD20 antibody [2H7] (FITC)

Cat. No. GTX00466-06

宿主	Mouse
克隆	Monoclonal
同种型	IgG2b
实验应用	FCM
种属反应	Human, Baboon, Chimpanzee, Cynomolgus monkey, Pig-tailed macaque, Rhesus Monkey, Squirrel monkey, Capuchin monkey

引用文献 (1)

## 产品说明

## 摘要

The 2H7 antibody reacts with human CD20, expressed by pre-B cells, resting and activated B cells, follicular dendritic cells and a small subset of T cells, but not on plasma cells. CD20 is a 33-37 kDa transmembrane protein which is differentially phosphorylated in resting and active B cells. The CD20 molecule plays a role in regulating B-cell activation.

## 实验应用

## 应用说明

\*最佳稀释倍数与浓度应由研究人员确认

## Suggested dilution

## Recommended dilution

FCM 0.25 µg (5 µl) for 10<sup>5</sup>-10<sup>8</sup> cells in 100 µl sample per test

以下为常规应用缩写的中文注解

WB: 免疫印迹

ICC/IF: 细胞染色

IHC-P: 石蜡切片

IHC-Fr: 冰冻切片

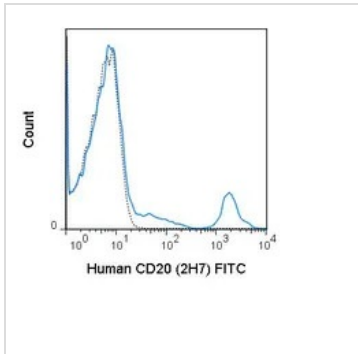
## 属性

形式	Liquid
存储溶液	10mM NaH <sub>2</sub> PO <sub>4</sub> , 150mM NaCl, 0.1% Gelatin
保存剂	0.09% Sodium azide
存放说明	Store as concentrated solution. Centrifuge briefly prior to opening vial. Store at 4°C. DO NOT FREEZE. Protect from light.
浓度	0.05 mg/ml (Please refer to the vial label for the specific concentration.)
偶联	Fluorescein isothiocyanate (FITC) <a href="#">Wavelength</a>
注意事项	仅供实验室使用。不适用于人类或动物的任何临床, 治疗或诊断用途。不适合动物或人类食用。



For full product information, images and publications, please visit our [website](#).

## 產品圖片

**GTX00466-06 FCM Image**

FACS analysis of human peripheral blood lymphocytes using GTX00466-06 CD20 antibody [2H7] (FITC).

Solid line : Primary antibody

Dashed line : FITC mouse IgG2b isotype control

Antibody amount : 0.25  $\mu$ g



For full product information, images and publications, please visit our [website](#).