

## CBX1 / HP1 beta antibody

Cat. No. GTX00736

宿主	Rabbit
克隆	Polyclonal
同种型	IgG
实验应用	WB, ICC/IF, ChIP assay
种属反应	Human, Hamster

## 实验应用

## 应用说明

\*最佳稀释倍数与浓度应由研究人员确认

Suggested dilution	Recommended dilution
WB	1:2000-1:10000
ICC/IF	Assay dependent
ChIP assay	Assay dependent

以下为常规应用缩写的中文注解

WB: 免疫印迹

ICC/IF: 细胞染色

IHC-P: 石蜡切片

IHC-Fr: 冰冻切片

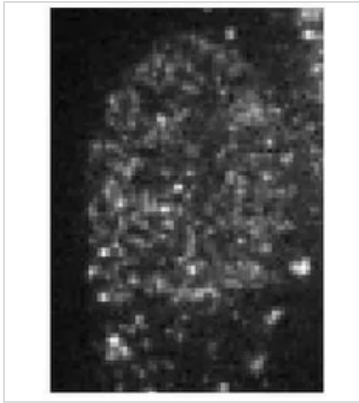
## 属性

形式	Liquid
存储溶液	Filter-sterilized 0.12M Sodium Phosphate, 50% Glycerol
保存剂	No preservatives
存放说明	Store as concentrated solution. Centrifuge briefly prior to opening vial. For short-term storage (1-2 weeks), store at 4°C. For long-term storage, aliquot and store at -20°C or below. Avoid multiple freeze-thaw cycles.
浓度	0.44 mg/ml (Please refer to the vial label for the specific concentration.)
偶联	Unconjugated
注意事项	仅供实验室使用。不适用于人类或动物的任何临床, 治疗或诊断用途。不适合动物或人类食用。

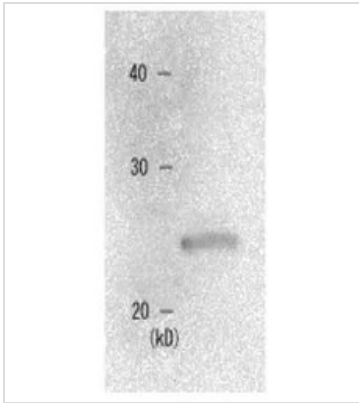


For full product information, images and publications, please visit our [website](#).

## 產品圖片

**GTX00736 ICC/IF Image**

ICC/IF analysis of Baby Hamster Kidney cells using GTX00736 CBX1 / HP1 beta antibody.  
Fixation : 4% PFA

**GTX00736 WB Image**

WB analysis of MCF-7 whole cell lysate using GTX00736 CBX1 / HP1 beta antibody.  
Dilution : 1:1000



For full product information, images and publications, please visit our [website](#).