

ATF2 (phospho Thr69) antibody

Cat. No. GTX00805

宿主	Rabbit
克隆	Polyclonal
同种型	IgG
实验应用	WB, ICC/IF, IHC-P, ELISA
种属反应	Human, Mouse, Rat

实验应用

应用说明

*最佳稀释倍数与浓度应由研究人员确认

Suggested dilution	Recommended dilution
WB	1:500-1:2000
ICC/IF	1:100-1:500
IHC-P	1:50-1:200
ELISA	Assay dependent

以下为常规应用缩写的中文注解

WB: 免疫印迹

ICC/IF: 细胞染色

IHC-P: 石蜡切片

IHC-Fr: 冰冻切片

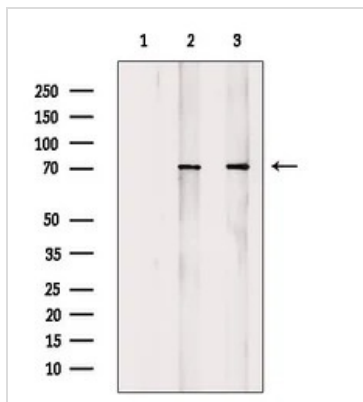
属性

形式	Liquid
存储溶液	PBS, 150mM NaCl, 50% Glycerol
保存剂	0.02% Sodium azide
存放说明	Store as concentrated solution. Centrifuge briefly prior to opening vial. For short-term storage (1-2 weeks), store at 4°C. For long-term storage, aliquot and store at -20°C or below. Avoid multiple freeze-thaw cycles.
浓度	1 mg/ml (Please refer to the vial label for the specific concentration.)
偶联	Unconjugated
注意事项	仅供实验室使用。不适用于人类或动物的任何临床、治疗或诊断用途。不适合动物或人类食用。



For full product information, images and publications, please visit our [website](#).

產品圖片



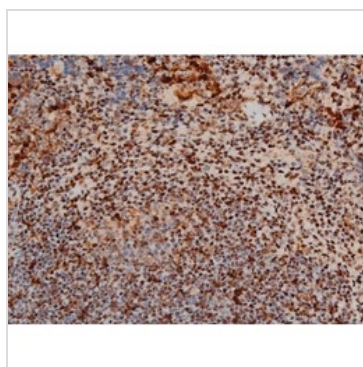
GTX00805 WB Image

WB analysis of various sample lysates using GTX00805 ATF2 (phospho Thr69) antibody.

Lane 1 : Heat-shock treated MCF7 cells, blocked with antigen-specific peptides

Lane 2 : Heat-shock treated MCF7 cells

Lane 3 : Heat-shock treated HeLa cells

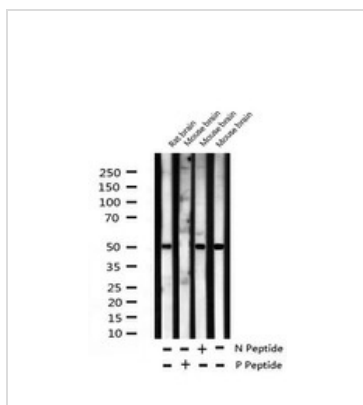


GTX00805 IHC-P Image

IHC-P analysis of mouse spleen tissue using GTX00805 ATF2 (phospho Thr69) antibody.

Antigen retrieval : Heat mediated antigen retrieval step in citrate buffer

Dilution : 1:200



GTX00805 WB Image

WB analysis of rat and mouse brain tissue lysates using GTX00805 ATF2 (phospho Thr69) antibody pre-incubated with phospho- or non-phospho- peptide.

P-peptide : phospho-peptide

N-peptide : non-phospho-peptide



For full product information, images and publications, please visit our [website](#).