

DSN1 antibody

Cat. No. GTX00889

宿主	Rabbit
克隆	Polyclonal
同种型	IgG
实验应用	WB, ICC/IF
种属反应	Human, Mouse, Rat

实验应用

应用说明

*最佳稀释倍数与浓度应由研究人员确认

Suggested dilution	Recommended dilution
WB	1:1000
ICC/IF	1:1000

以下为常规应用缩写的中文注解

WB: 免疫印迹

ICC/IF: 细胞染色

IHC-P: 石蜡切片

IHC-Fr: 冰冻切片

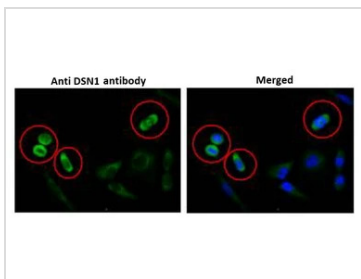
属性

形式	Liquid
存储溶液	Serum
保存剂	0.05% Sodium azide
存放说明	Store as concentrated solution. Centrifuge briefly prior to opening vial. For short-term storage (1-2 weeks), store at 4°C. For long-term storage, aliquot and store at -20°C or below. Avoid multiple freeze-thaw cycles.
浓度	Batch dependent (Please refer to the vial label for the specific concentration.)
偶联	Unconjugated
注意事项	仅供实验室使用。不适用于人类或动物的任何临床，治疗或诊断用途。不适合动物或人类食用。



For full product information, images and publications, please visit our [website](#).

產品圖片

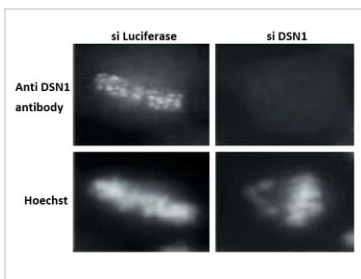


GTX00889 ICC/IF Image

ICC/IF analysis of HeLa cells using GTX00889 DSN1 antibody. DSN1 is abundantly expressed in mitotic cells on mitotic apparatus.

Fixation : 4% PFA

Dilution : 1:100

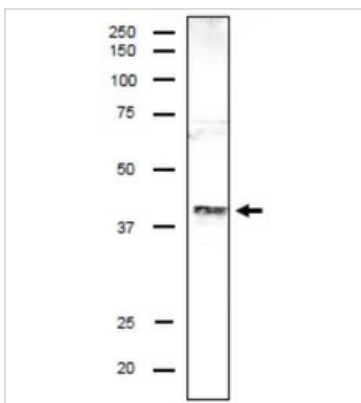


GTX00889 ICC/IF Image

ICC/IF analysis of HeLa cells using GTX00889 DSN1 antibody. Mitotic cells were accumulated by nocodazole treatment and chromosomes were spread on coverglass.

Left : Cells transfected with luciferase siRNA (as a control)

Right : Cells transfected with DSN1 siRNA

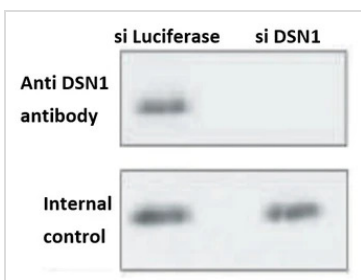


GTX00889 WB Image

WB analysis of MCF-7 whole cell lysate using GTX00889 DSN1 antibody.

Dilution : 1:1000

Loading : 20 µg



GTX00889 WB Image

WB analysis of HeLa whole cell lysate using GTX00889 DSN1 antibody.

Lane 1 : Cells transfected with luciferase siRNA (as a control)

Lane 2 : Cells transfected with DSN1 siRNA

Dilution : 1:1000



For full product information, images and publications, please visit our [website](#).