

SMAD3 (phospho Ser423/Ser425) antibody [GT1207]

Cat. No. GTX00969

宿主	Rabbit
克隆	Monoclonal
同种型	IgG
实验应用	WB, IHC-P
种属反应	Human, Mouse, Rat

引用文献 (6)

★★★★★ 产品评论 (1)

实验应用

应用说明

*最佳稀释倍数与浓度应由研究人员确认

Suggested dilution	Recommended dilution
WB	1:500 - 1:2000
IHC-P	1:50 - 1:200

以下为常规应用缩写的中文注解

WB: 免疫印迹

ICC/IF: 细胞染色

IHC-P: 石蜡切片

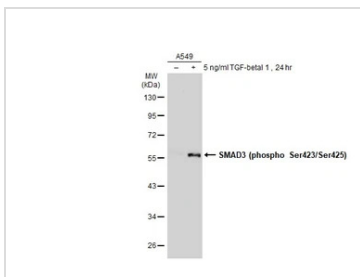
IHC-Fr: 冰冻切片

属性

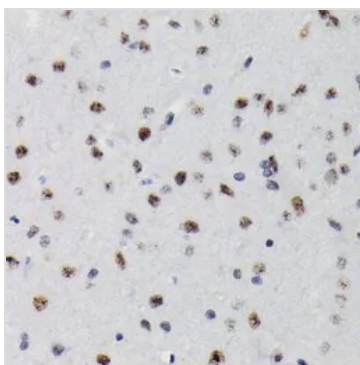
形式	Liquid
存储溶液	PBS, 50% Glycerol
保存剂	0.02% Sodium azide
存放说明	Store as concentrated solution. Centrifuge briefly prior to opening vial. For short-term storage (1-2 weeks), store at 4°C. For long-term storage, aliquot and store at -20°C or below. Avoid multiple freeze-thaw cycles.
浓度	Batch dependent (Please refer to the vial label for the specific concentration.)
偶联	Unconjugated
RRID	AB_2885209
注意事项	仅供实验室使用。不适用于人类或动物的任何临床, 治疗或诊断用途。不适合动物或人类食用。

For full product information, images and publications, please visit our [website](#).

產品圖片

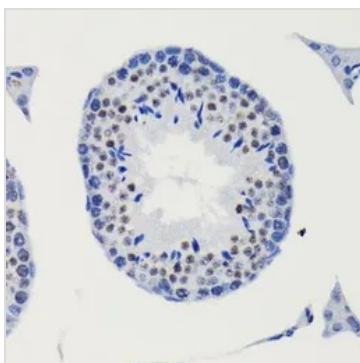
**GTX00969 WB Image**

Untreated (-) and treated (+) A549 whole cell extracts (30 µg) were separated by 10% SDS-PAGE, and the membrane was blotted with SMAD3 (phospho Ser423/Ser425) antibody [GT1207] (GTX00969) diluted at 1:500. The HRP-conjugated anti-rabbit IgG antibody (GTX213110-01) was used to detect the primary antibody.

**GTX00969 IHC-P Image**

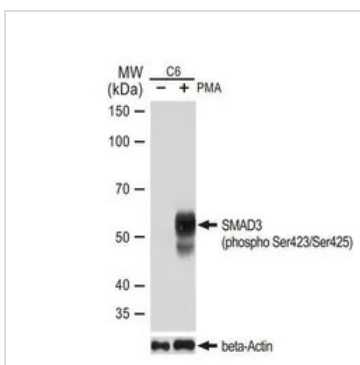
IHC-P analysis of rat brain tissue section using GTX00969 SMAD3 (phospho Ser423/Ser425) antibody [GT1207].

Dilution : 1:100

**GTX00969 IHC-P Image**

IHC-P analysis of mouse testis tissue section using GTX00969 SMAD3 (phospho Ser423/Ser425) antibody [GT1207].

Dilution : 1:100

**GTX00969 WB Image**

WB analysis of C6 cell extracts with/without PMA/TPA (200 nM, 37°C, 10 min) treatment using GTX00969 SMAD3 (phospho Ser423/Ser425) antibody [GT1207].

Dilution : 1:1000

Loading : 25µg



For full product information, images and publications, please visit our [website](http://www.genetex.com).