

NCAM antibody [MY31] (FITC)

Cat. No. GTX01477-06

宿主	Mouse
克隆	Monoclonal
同种型	IgG1
实验应用	FCM
种属反应	Human, Chimpanzee, Cynomolgus monkey, Rhesus Monkey

引用文献 (5)

产品说明

摘要

The MY31 antibody reacts with human CD56, also known as the neural cell adhesion molecule (NCAM), a glycoprotein which is a member of the immunoglobulin superfamily. The 140 kDa isoform of CD56 is expressed on human NK cells and NK-T cells, with increased expression levels on activated NK lymphocytes. The CD56 antigen is also expressed by neurons and is reported to play a role in nervous system development and neural cell-to-cell adhesion. Clone MY31 also reacts with a subset of CD14+ monocytes in non-human primates, and is reported to be cross-reactive with Chimpanzee, Cynomolgus and Rhesus.

实验应用

应用说明

*最佳稀释倍数与浓度应由研究人员确认

Suggested dilution	Recommended dilution
FCM	1 µg (5 µl) for 10 ⁵ -10 ⁸ cells in 100 µl sample per test

以下为常规应用缩写的中文注解

WB: 免疫印迹
ICC/IF: 细胞染色
IHC-P: 石蜡切片
IHC-Fr: 冰冻切片

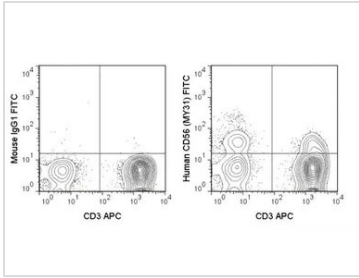
属性

形式	Liquid
存储溶液	10mM NaH ₂ PO ₄ , 150mM NaCl, 0.1% Gelatin
保存剂	0.09% Sodium azide
存放说明	Store as concentrated solution. Centrifuge briefly prior to opening vial. Store at 4°C. DO NOT FREEZE. Protect from light.
浓度	0.2 mg/ml (Please refer to the vial label for the specific concentration.)
偶联	Fluorescein isothiocyanate (FITC) Wavelength
注意事项	仅供实验室使用。不适用于人类或动物的任何临床, 治疗或诊断用途。不适合动物或人类食用。



For full product information, images and publications, please visit our [website](#).

產品圖片

**GTX01477-06 FCM Image**

FACS analysis of human peripheral blood lymphocytes using GTX01477-06 NCAM antibody [MY31] (FITC).

Right panel : co-stained with NCAM antibody [MY31] (FITC) and Human CD3 antibody (APC)

Left panel : co-stained with isotype control and Human CD3 antibody (APC)

antibody amount : 1 μ g (5 μ l)



For full product information, images and publications, please visit our [website](#).