

## MAN1B1 antibody [3C2]

Cat. No. GTX03413

宿主	Mouse
克隆	Monoclonal
同种型	IgG1
实验应用	WB, ICC/IF, IHC-P, IP, ELISA
种属反应	Human

引用文献 (1)

## 实验应用

## 应用说明

\*最佳稀释倍数与浓度应由研究人员确认

Suggested dilution	Recommended dilution
WB	1:500-1:1000
ICC/IF	1:100
IHC-P	1:200
IP	1:10-1:100
ELISA	1:1000

**Note : Antigen retrieval with sodium citrate buffer (pH 6.0) is recommended**

以下为常规应用缩写的中文注解

WB: 免疫印迹

ICC/IF: 细胞染色

IHC-P: 石蜡切片

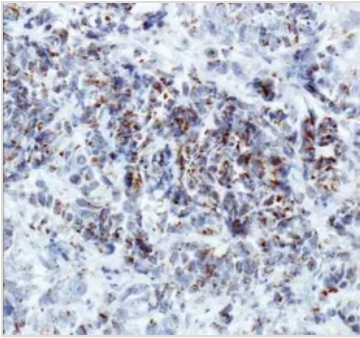
IHC-Fr: 冰冻切片

## 属性

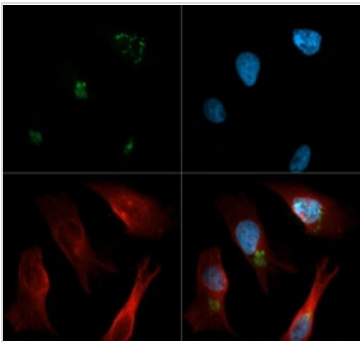
形式	Liquid
存储溶液	Tris-Glycine, 150mM NaCl
保存剂	0.05% sodium azide
存放说明	Store as concentrated solution. Centrifuge briefly prior to opening vial. For short-term storage (1-2 weeks), store at 4°C. For long-term storage, aliquot and store at -20°C or below. Avoid multiple freeze-thaw cycles.
浓度	1 mg/ml (Please refer to the vial label for the specific concentration.)
偶联	Unconjugated
注意事项	仅供实验室使用。不适用于人类或动物的任何临床、治疗或诊断用途。不适合动物或人类食用。

For full product information, images and publications, please visit our [website](#).

## 產品圖片

**GTX03413 IHC-P Image**

IHC-P analysis of human breast cancer using GTX03413 MAN1B1 antibody [3C2].

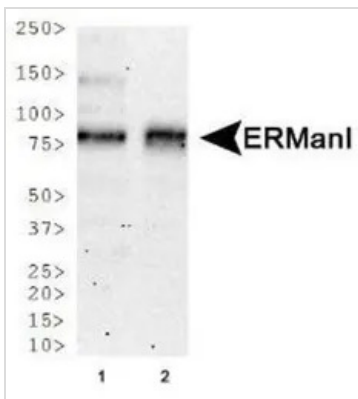
**GTX03413 ICC/IF Image**

ICC/IF analysis of HeLa cells using GTX03413 MAN1B1 antibody [3C2].

Green : Primary antibody

Red : alpha tubulin

Blue : DAPI

**GTX03413 WB Image**

WB analysis of various sample lysates using GTX03413 MAN1B1 antibody [3C2].

Lane 1 : NTERA-2 whole cell lysate

Lane 2 : A431 whole cell lysate



For full product information, images and publications, please visit our [website](#).