

## CD92 antibody [VIM15] (PE)

Cat. No. GTX03728-08

宿主	Mouse
克隆	Monoclonal
同种型	IgG1
实验应用	FCM
种属反应	Human

## 实验应用

## 应用说明

\*最佳稀释倍数与浓度应由研究人员确认

Suggested dilution	Recommended dilution
FCM	10 $\mu$ l/1x10 <sup>6</sup> cells or 100 $\mu$ l of whole blood

以下为常规应用缩写的中文注解

WB: 免疫印迹

ICC/IF: 细胞染色

IHC-P: 石蜡切片

IHC-Fr: 冰冻切片

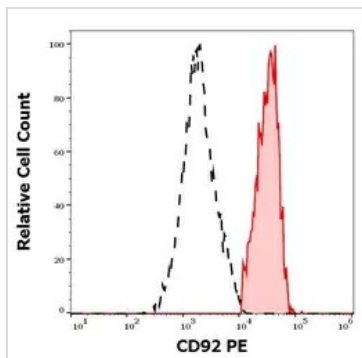
## 属性

形式	Liquid
存储溶液	PBS
保存剂	15 mM sodium azide
存放说明	Store as concentrated solution. Centrifuge briefly prior to opening vial. Store at 4°C. DO NOT FREEZE. Protect from light.
浓度	Batch dependent (Please refer to the vial label for the specific concentration.)
偶联	Phycoerythrin (PE) <a href="#">Wavelength</a>
注意事项	仅供实验室使用。不适用于人类或动物的任何临床，治疗或诊断用途。不适合动物或人类食用。



For full product information, images and publications, please visit our [website](#).

## 產品圖片

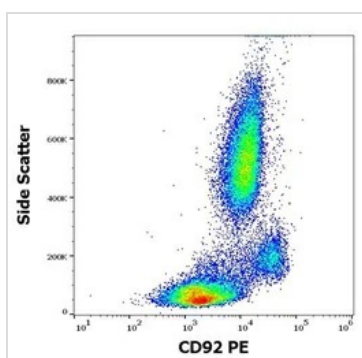
**GTX03728-08 FCM Image**

FACS analysis of human peripheral whole blood using GTX03728-08 CD92 antibody [VIM15] (PE).

Red-filled : CD92 positive monocytes

Black-dashed : Lymphocytes

Antibody amount : 10  $\mu$ l reagent / 100  $\mu$ l of peripheral whole blood

**GTX03728-08 FCM Image**

FACS analysis of human peripheral whole blood using GTX03728-08 CD92 antibody [VIM15] (PE).

Antibody amount : 10  $\mu$ l reagent / 100  $\mu$ l of peripheral whole blood



For full product information, images and publications, please visit our [website](#).