

SCAP antibody

Cat. No. GTX03796

宿主	Rabbit
克隆	Polyclonal
同种型	IgG
实验应用	WB, ICC/IF, IHC-P, FCM
种属反应	Human, Mouse, Rat

实验应用

应用说明

*最佳稀释倍数与浓度应由研究人员确认

Suggested dilution	Recommended dilution
WB	1:1000
ICC/IF	1:100
IHC-P	1:50-1:100
FCM	1:25

Note : Permeabilization : 90% methanol for 10 min

以下为常规应用缩写的中文注解

WB: 免疫印迹

ICC/IF: 细胞染色

IHC-P: 石蜡切片

IHC-Fr: 冰冻切片

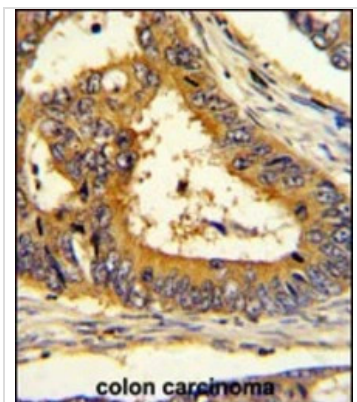
属性

形式	Liquid
存储溶液	PBS
保存剂	0.09% sodium azide
存放说明	Store as concentrated solution. Centrifuge briefly prior to opening vial. For short-term storage (1-2 weeks), store at 4°C. For long-term storage, aliquot and store at -20°C or below. Avoid multiple freeze-thaw cycles.
浓度	Batch dependent (Please refer to the vial label for the specific concentration.)
偶联	Unconjugated
注意事项	仅供实验室使用。不适用于人类或动物的任何临床、治疗或诊断用途。不适合动物或人类食用。

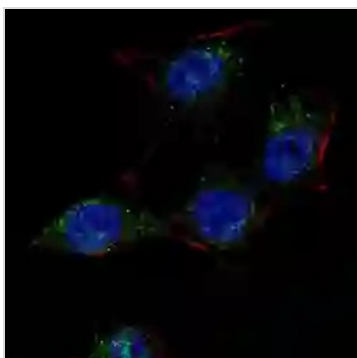


For full product information, images and publications, please visit our [website](#).

產品圖片

**GTX03796 IHC-P Image**

IHC-P analysis of human colon carcinoma tissue using GTX03796 SCAP antibody.

**GTX03796 ICC/IF Image**

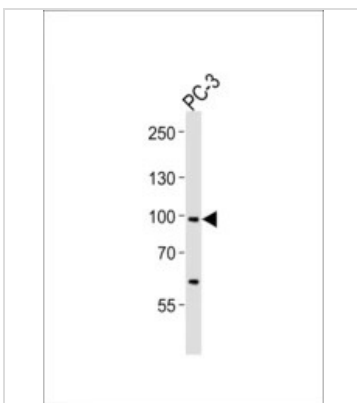
ICC/IF analysis of 4% PFA-fixed HeLa cells using GTX03796 SCAP antibody.

Green : Primary antibody

Blue : Hoechst 33342

Permeabilization : 0.2% Triton X-100, 30 min

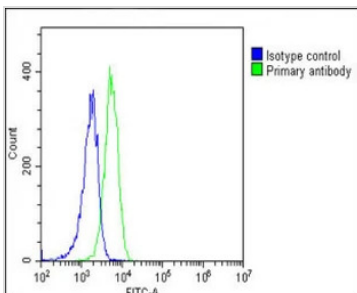
Dilution : 1:100

**GTX03796 WB Image**

WB analysis of PC-3 cell lysate using GTX03796 SCAP antibody.

Loading : 35 μ g

Dilution : 1:1000

**GTX03796 FCM Image**

FACS analysis of 2% paraformaldehyde-fixed K562 cells using GTX03796 SCAP antibody. Acquisition of > 10, 000 events was performed.

Green : Primary antibody

Blue : Isotype control

Permeabilization : 90% methanol for 10 min

Dilution : 1:25



For full product information, images and publications, please visit our [website](#).