

Goat Anti-Human IgM (Mu chain) antibody, F(ab')<sub>2</sub> fragment, pre-adsorbed (Biotin)

Cat. No. GTX04121-02

宿主	Goat
克隆	Polyclonal
同种型	IgG F(ab') <sub>2</sub>
实验应用	ICC/IF, FCM, ELISA, Activation, ELISPOT
种属反应	Human

Package

500 µg

## 实验应用

## 应用说明

\*最佳稀释倍数与浓度应由研究人员确认

## Suggested dilution Recommended dilution

ICC/IF Assay dependent

FCM  $\leq 1 \mu\text{g}/10^6\text{cells}$ 

ELISA 1:5000-1:20000

Activation Assay dependent

ELISPOT Assay dependent

**Note : The suggested use of these reagents is in a final volume of 100µl.**

以下为常规应用缩写的中文注解

WB: 免疫印迹

ICC/IF: 细胞染色

IHC-P: 石蜡切片

IHC-Fr: 冰冻切片

产品说明 Pre-adsorbed with Human IgG and IgA. May react with IgM from other species.

## 属性

形式 Liquid

存储溶液 PBS

保存剂 0.09% sodium azide

存放说明 Store as concentrated solution. Centrifuge briefly prior to opening vial. Store at 4°C.

浓度 0.5 mg/ml (Please refer to the vial label for the specific concentration.)

免疫原 Pepsin digest of Goat Anti-Human IgM.

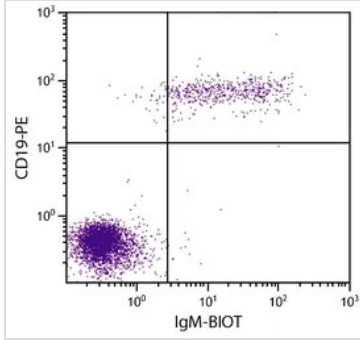
纯化方式 Purified IgG

For full product information, images and publications, please visit our [website](#).

偶联 Biotin

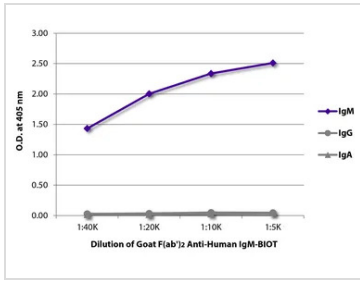
注意事项 仅供实验室使用。不适用于人类或动物的任何临床，治疗或诊断用途。不适合动物或人类食用。

产品图片



**GTX04121-02 FCM Image**

FACS analysis of human peripheral blood lymphocytes using Mouse Anti-Human CD19 antibody (PE) followed by GTX04121-02 Goat Anti-Human IgM (Mu chain) antibody, F(ab')<sub>2</sub> fragment, pre-adsorbed (Biotin) followed by Streptavidin (FITC).



**GTX04121-02 ELISA Image**

ELISA analysis of purified human immunoglobulins using serially diluted GTX04121-02 Goat Anti-Human IgM (Mu chain) antibody, F(ab')<sub>2</sub> fragment, pre-adsorbed (Biotin) followed by Streptavidin (HRP).



For full product information, images and publications, please visit our [website](#).