

Goat Anti-Rat IgM (Mu chain) antibody, pre-adsorbed (Biotin)

Cat. No. GTX04137-02

宿主	Goat
克隆	Polyclonal
同种型	IgG
实验应用	WB, ICC/IF, IHC-P, IHC-Fr, FCM, ELISA
种属反应	Rat

Package
1 mg

实验应用

应用说明

*最佳稀释倍数与浓度应由研究人员确认

Suggested dilution	Recommended dilution
WB	Assay dependent
ICC/IF	Assay dependent
IHC-P	Assay dependent
IHC-Fr	Assay dependent
FCM	Assay dependent
ELISA	1:5000-1:20000

以下为常规应用缩写的中文注解

WB: 免疫印迹

ICC/IF: 细胞染色

IHC-P: 石蜡切片

IHC-Fr: 冰冻切片

产品说明 Pre-adsorbed with Rat IgG. May react with immunoglobulins from other species.

属性

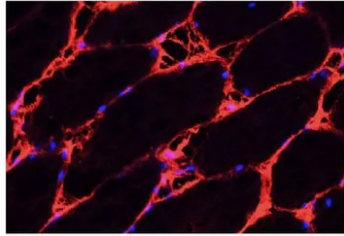
形式	Liquid
存储溶液	PBS
保存剂	0.09% sodium azide
存放说明	Store as concentrated solution. Centrifuge briefly prior to opening vial. Store at 4°C.
浓度	0.5 mg/ml (Please refer to the vial label for the specific concentration.)
免疫原	Pooled antisera from goats hyperimmunized with rat IgM
纯化方式	Purified by antigen-affinity chromatography

For full product information, images and publications, please visit our [website](#).

偶联 Biotin

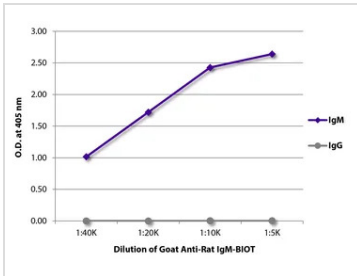
注意事项 仅供实验室使用。不适用于人类或动物的任何临床，治疗或诊断用途。不适合动物或人类食用。

产品图片



GTX04137-02 IHC-Fr Image

IHC-Fr analysis of rat gastrocnemius muscle tissue using GTX04137-02 Goat Anti-Rat IgM (Mu chain) antibody, pre-adsorbed (Biotin) followed by a CY3 secondary reagent and DAPI.



GTX04137-02 ELISA Image

ELISA analysis of purified rat immunoglobulins using serially diluted GTX04137-02 Goat Anti-Rat IgM (Mu chain) antibody, pre-adsorbed (Biotin).



For full product information, images and publications, please visit our [website](#).