

IL1F8 antibody

Cat. No. GTX04549

宿主	Rabbit
克隆	Polyclonal
同种型	IgG
实验应用	WB, ICC/IF, IHC-P
种属反应	Human, Mouse

实验应用

应用说明

*最佳稀释倍数与浓度应由研究人员确认

Suggested dilution	Recommended dilution
WB	1:500-1:2000
ICC/IF	1:100-1:500
IHC-P	1:50-1:200

以下为常规应用缩写的中文注解

WB: 免疫印迹

ICC/IF: 细胞染色

IHC-P: 石蜡切片

IHC-Fr: 冰冻切片

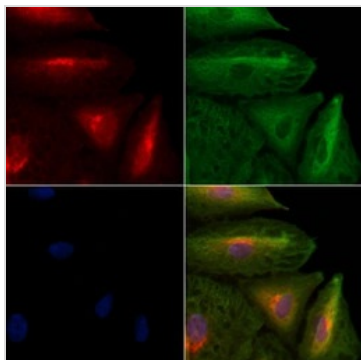
属性

形式	Liquid
存储溶液	PBS, 150mM NaCl, 50% Glycerol
保存剂	0.02% Sodium Azide
存放说明	Store as concentrated solution. Centrifuge briefly prior to opening vial. For short-term storage (1-2 weeks), store at 4°C. For long-term storage, aliquot and store at -20°C or below. Avoid multiple freeze-thaw cycles.
浓度	1 mg/ml (Please refer to the vial label for the specific concentration.)
偶联	Unconjugated
注意事项	仅供实验室使用。不适用于人类或动物的任何临床, 治疗或诊断用途。不适合动物或人类食用。



For full product information, images and publications, please visit our [website](#).

產品圖片



GTX04549 ICC/IF Image

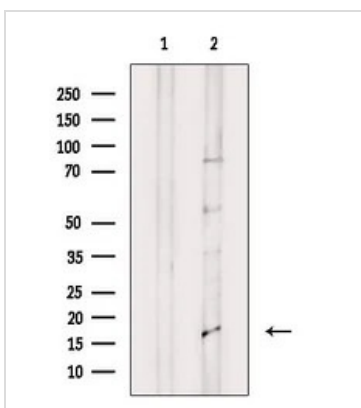
ICC/IF analysis of PFA fixed A549 cells using GTX04549 IL1F8 antibody.

Red : Primary antibody

Green : Beta tubulin

Blue : DAPI

Permeabilization : 0.1% Triton X-100



GTX04549 WB Image

WB analysis of HepG2 whole cell lysate with serum starvation treatment using GTX04549 IL1F8 antibody.

The lane on the left was treated with blocking peptide.



For full product information, images and publications, please visit our [website](#).