

GAS2L1 antibody

Cat. No. GTX04904

宿主	Rabbit
克隆	Polyclonal
同种型	IgG
实验应用	WB, FCM
种属反应	Human

实验应用

应用说明

*最佳稀释倍数与浓度应由研究人员确认

Suggested dilution	Recommended dilution
WB	1:1000
FCM	1:10-1:50

以下为常规应用缩写的中文注解

WB: 免疫印迹

ICC/IF: 细胞染色

IHC-P: 石蜡切片

IHC-Fr: 冰冻切片

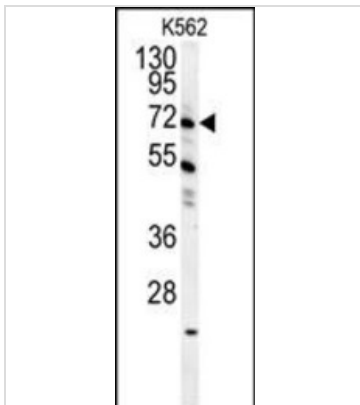
属性

形式	Liquid
存储溶液	PBS
保存剂	0.09% Sodium Azide
存放说明	Store as concentrated solution. Centrifuge briefly prior to opening vial. For short-term storage (1-2 weeks), store at 4°C. For long-term storage, aliquot and store at -20°C or below. Avoid multiple freeze-thaw cycles.
浓度	Batch dependent (Please refer to the vial label for the specific concentration.)
偶联	Unconjugated
注意事项	仅供实验室使用。不适用于人类或动物的任何临床，治疗或诊断用途。不适合动物或人类食用。



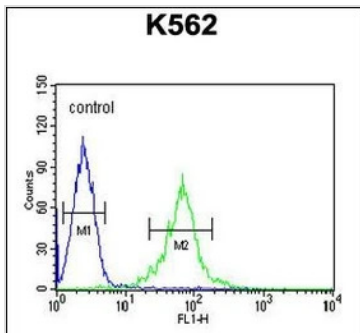
For full product information, images and publications, please visit our [website](#).

產品圖片



GTX04904 WB Image

WB analysis of K562 whole cell lysate using GTX04904 GAS2L1 antibody.
Loading : 35µg



GTX04904 FCM Image

FACS analysis of K562 cells using GTX04904 GAS2L1 antibody.
Green : Primary antibody
Blue : Negative control cell



For full product information, images and publications, please visit our [website](#).