

## GAL3ST1 antibody

Cat. No. GTX04952

宿主	Rabbit
克隆	Polyclonal
同种型	IgG
实验应用	WB, IHC-P, FCM
种属反应	Human, Mouse

## 实验应用

## 应用说明

\*最佳稀释倍数与浓度应由研究人员确认

Suggested dilution	Recommended dilution
WB	1:2000
IHC-P	1:50-1:100
FCM	1:10-1:50

以下为常规应用缩写的中文注解

WB: 免疫印迹

ICC/IF: 细胞染色

IHC-P: 石蜡切片

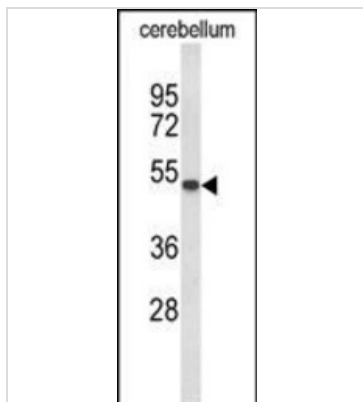
IHC-Fr: 冰冻切片

## 属性

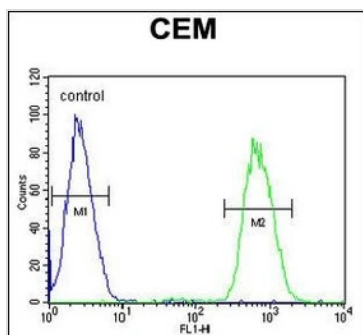
形式	Liquid
存储溶液	PBS
保存剂	0.09% Sodium Azide
存放说明	Store as concentrated solution. Centrifuge briefly prior to opening vial. For short-term storage (1-2 weeks), store at 4°C. For long-term storage, aliquot and store at -20°C or below. Avoid multiple freeze-thaw cycles.
浓度	Batch dependent (Please refer to the vial label for the specific concentration.)
偶联	Unconjugated
注意事项	仅供实验室使用。不适用于人类或动物的任何临床, 治疗或诊断用途。不适合动物或人类食用。



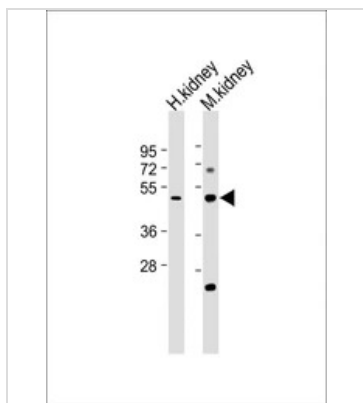
For full product information, images and publications, please visit our [website](#).

**產品图片**

**GTX04952 WB Image**

WB analysis of mouse cerebellum tissue lysate using GTX04952 GAL3ST1 antibody.  
Loading : 35 $\mu$ g


**GTX04952 FCM Image**

FACS analysis of CEM cells using GTX04952 GAL3ST1 antibody.  
Green line : Primary antibody  
Blue line : Negative control cell


**GTX04952 WB Image**

WB analysis of various samples using GTX04952 GAL3ST1 antibody.  
Lane 1 : Human kidney tissue lysate  
Lane 4 : Mouse kidney tissue lysate  
Loading : 20 $\mu$ g  
Dilution : 1:2000



For full product information, images and publications, please visit our [website](#).