

alpha Smooth Muscle Actin antibody

Cat. No. GTX100034

宿主	Rabbit
克隆	Polyclonal
同种型	IgG
实验应用	WB, ICC/IF, IHC-P, IHC-Fr
种属反应	Human, Mouse, Rat, Zebrafish

引用文献 (119)

★★★★★ 产品评论 (7)

实验应用

应用说明

*最佳稀释倍数与浓度应由研究人员确认

Suggested dilution	Recommended dilution
WB	1:500-1:3000
ICC/IF	1:100-1:1000
IHC-P	1:100-1:1000
IHC-Fr	Assay dependent

以下为常规应用缩写的中文注解

WB: 免疫印迹

ICC/IF: 细胞染色

IHC-P: 石蜡切片

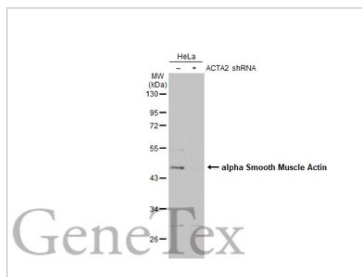
IHC-Fr: 冰冻切片

属性

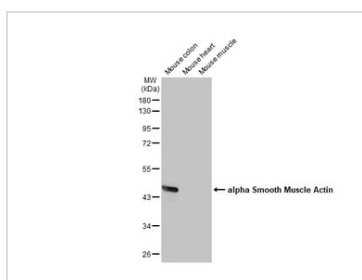
形式	Liquid
存储溶液	PBS, 20% Glycerol
保存剂	0.025% ProClin 300
存放说明	Store as concentrated solution. Centrifuge briefly prior to opening vial. For short-term storage (1-2 weeks), store at 4°C. For long-term storage, aliquot and store at -20°C or below. Avoid multiple freeze-thaw cycles.
浓度	1.28 mg/ml (Please refer to the vial label for the specific concentration.)
偶联	Unconjugated
RRID	AB_1240408
注意事项	仅供实验室使用。不适用于人类或动物的任何临床, 治疗或诊断用途。不适合动物或人类食用。

For full product information, images and publications, please visit our [website](#).

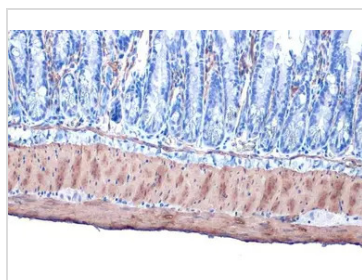
產品圖片

**GTX100034 WB Image**

Non-transfected (-) and transfected (+) HeLa whole cell extracts (30 μ g) were separated by 10% SDS-PAGE, and the membrane was blotted with alpha Smooth Muscle Actin antibody (GTX100034) diluted at 1:500. The HRP-conjugated anti-rabbit IgG antibody (GTX213110-01) was used to detect the primary antibody.

**GTX100034 WB Image**

Various tissue extracts (50 μ g) were separated by 10% SDS-PAGE, and the membrane was blotted with alpha Smooth Muscle Actin antibody (GTX100034) diluted at 1:5000. The HRP-conjugated anti-rabbit IgG antibody (GTX213110-01) was used to detect the primary antibody.

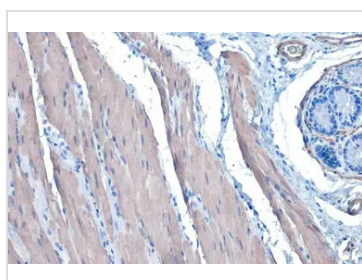
**GTX100034 IHC-P Image**

alpha Smooth Muscle Actin antibody detects alpha Smooth Muscle Actin protein at cytoplasm by immunohistochemical analysis.

Sample: Paraffin-embedded mouse smooth muscle.

alpha Smooth Muscle Actin stained by alpha Smooth Muscle Actin antibody (GTX100034) diluted at 1:500.

Antigen Retrieval: Citrate buffer, pH 6.0, 15 min

**GTX100034 IHC-P Image**

alpha Smooth Muscle Actin antibody detects alpha Smooth Muscle Actin protein at cytoplasm by immunohistochemical analysis.

Sample: Paraffin-embedded mouse smooth muscle.

alpha Smooth Muscle Actin stained by alpha Smooth Muscle Actin antibody (GTX100034) diluted at 1:500.

Antigen Retrieval: Citrate buffer, pH 6.0, 15 min



For full product information, images and publications, please visit our [website](http://www.genetex.com).