

## Rad9 antibody

Cat. No. GTX100078

宿主	Rabbit
克隆	Polyclonal
同种型	IgG
实验应用	WB, ICC/IF, IHC-P
种属反应	Human, Mouse, Rat

引用文献 (1)

## 实验应用

## 应用说明

\*最佳稀释倍数与浓度应由研究人员确认

Suggested dilution	Recommended dilution
WB	1:500-1:3000
ICC/IF	1:100-1:1000
IHC-P	1:100-1:1000

以下为常规应用缩写的中文注解

WB: 免疫印迹

ICC/IF: 细胞染色

IHC-P: 石蜡切片

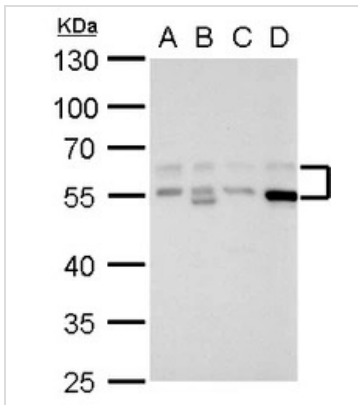
IHC-Fr: 冰冻切片

## 属性

形式	Liquid
存储溶液	PBS, 1% BSA, 20% Glycerol
保存剂	0.01% Thimerosal
存放说明	Store as concentrated solution. Centrifuge briefly prior to opening vial. For short-term storage (1-2 weeks), store at 4°C. For long-term storage, aliquot and store at -20°C or below. Avoid multiple freeze-thaw cycles.
浓度	1 mg/ml (Please refer to the vial label for the specific concentration.)
偶联	Unconjugated
RRID	AB_1241238
注意事项	仅供实验室使用。不适用于人类或动物的任何临床, 治疗或诊断用途。不适合动物或人类食用。

For full product information, images and publications, please visit our [website](#).

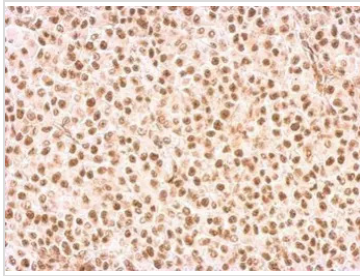
## 產品圖片

**GTX100078 WB Image**

Rad9 antibody detects Rad9 protein by Western blot analysis.

- A. 30  $\mu$ g 293T whole cell lysate/extract
  - B. 30  $\mu$ g A431 whole cell lysate/extract
  - C. 30  $\mu$ g HeLa whole cell lysate/extract
  - D. 30  $\mu$ g HepG2 whole cell lysate/extract
- 10 % SDS-PAGE

Rad9 antibody (GTX100078) dilution: 1:1000

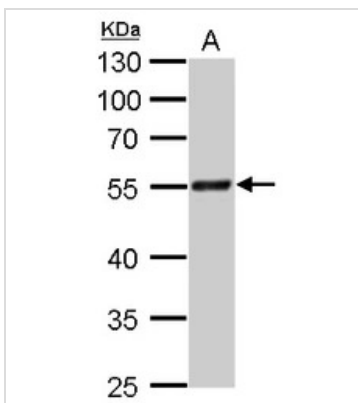
**GTX100078 IHC-P Image**

Rad9 antibody detects RAD9A protein at nucleus on HBL435 xenograft by immunohistochemical analysis.

Sample: Paraffin-embedded HBL435 xenograft.

Rad9 antibody (GTX100078) dilution: 1:500.

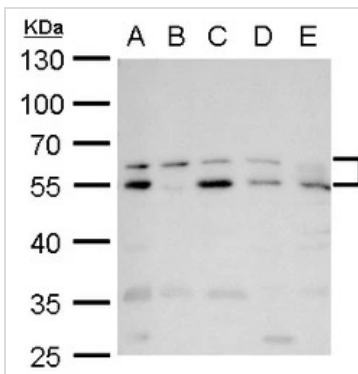
Antigen Retrieval: Trilogy™ (EDTA based, pH 8.0) buffer, 15min

**GTX100078 WB Image**

Rad9 antibody detects Rad9 protein by Western blot analysis.

- A. 30  $\mu$ g PC-12 whole cell lysate/extract
- 10 % SDS-PAGE

Rad9 antibody (GTX100078) dilution: 1:500

**GTX100078 WB Image**

Rad9 antibody detects Rad9 protein by Western blot analysis.

- A. 30  $\mu$ g Neuro2A whole cell lysate/extract
  - B. 30  $\mu$ g GL261 whole cell lysate/extract
  - C. 30  $\mu$ g C8D30 whole cell lysate/extract
  - D. 30  $\mu$ g NIH-3T3 whole cell lysate/extract
  - E. 30  $\mu$ g BCL-1 whole cell lysate/extract
- 10 % SDS-PAGE

Rad9 antibody (GTX100078) dilution: 1:500



For full product information, images and publications, please visit our [website](#).