

## UBE2A antibody

Cat. No. GTX100426

宿主	Rabbit
克隆	Polyclonal
同种型	IgG
实验应用	WB, ICC/IF
种属反应	Human

## 实验应用

## 应用说明

\*最佳稀释倍数与浓度应由研究人员确认

Suggested dilution	Recommended dilution
WB	1:500-1:3000
ICC/IF	1:100-1:1000

以下为常规应用缩写的中文注解

WB: 免疫印迹

ICC/IF: 细胞染色

IHC-P: 石蜡切片

IHC-Fr: 冰冻切片

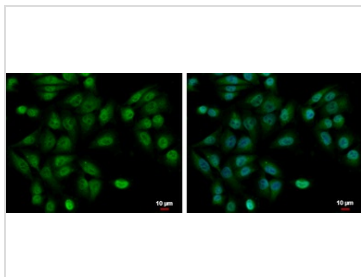
## 属性

形式	Liquid
存储溶液	PBS, 20% Glycerol
保存剂	0.01% Thimerosal
存放说明	Store as concentrated solution. Centrifuge briefly prior to opening vial. For short-term storage (1-2 weeks), store at 4°C. For long-term storage, aliquot and store at -20°C or below. Avoid multiple freeze-thaw cycles.
浓度	0.93 mg/ml (Please refer to the vial label for the specific concentration.)
偶联	Unconjugated
RRID	AB_1241237
注意事项	仅供实验室使用。不适用于人类或动物的任何临床, 治疗或诊断用途。不适合动物或人类食用。



For full product information, images and publications, please visit our [website](#).

## 產品圖片

**GTX100426 ICC/IF Image**

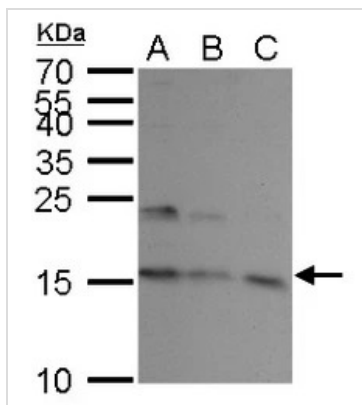
UBE2A antibody detects UBE2A protein at cytoplasm and nucleus by immunofluorescent analysis.

Sample: A375 cells were fixed in 4% paraformaldehyde at RT for 15 min.

Green: UBE2A protein stained by UBE2A antibody (GTX100426) diluted at 1:500.

Blue: Hoechst 33342 staining.

Scale bar = 10 µm.

**GTX100426 WB Image**

UBE2A antibody detects UBE2A protein by Western blot analysis.

A. 30 µg K562 whole cell lysate/extract

B. 30 µg THP-1 whole cell lysate/extract

C. 30 µg HL-60 whole cell lysate/extract

15 % SDS-PAGE

UBE2A antibody (GTX100426) dilution: 1:1000



For full product information, images and publications, please visit our [website](#).