

p21 Cip1 antibody

Cat. No. GTX100444

宿主	Rabbit
克隆	Polyclonal
同种型	IgG
实验应用	WB, ICC/IF
种属反应	Human, Rat

引用文献 (17)

★★★★☆ 产品评论 (1)

实验应用

应用说明

*最佳稀释倍数与浓度应由研究人员确认

Suggested dilution	Recommended dilution
WB	1:500-1:3000
ICC/IF	1:100-1:1000

以下为常规应用缩写的中文注解

WB: 免疫印迹

ICC/IF: 细胞染色

IHC-P: 石蜡切片

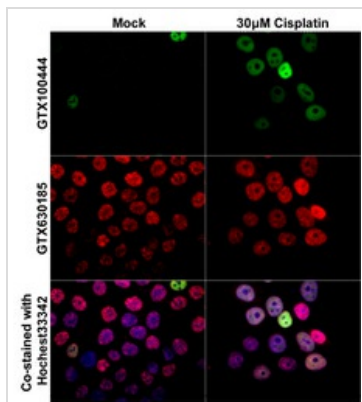
IHC-Fr: 冰冻切片

属性

形式	Liquid
存储溶液	PBS, 20% Glycerol
保存剂	0.01% Thimerosal
存放说明	Store as concentrated solution. Centrifuge briefly prior to opening vial. For short-term storage (1-2 weeks), store at 4°C. For long-term storage, aliquot and store at -20°C or below. Avoid multiple freeze-thaw cycles.
浓度	1 mg/ml (Please refer to the vial label for the specific concentration.)
偶联	Unconjugated
RRID	AB_2037582
注意事项	仅供实验室使用。不适用于人类或动物的任何临床, 治疗或诊断用途。不适合动物或人类食用。

For full product information, images and publications, please visit our [website](#).

產品圖片



GTX100444 ICC/IF Image

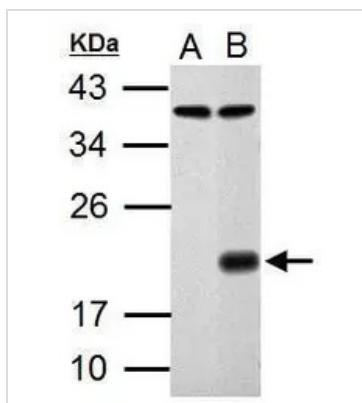
p21 Cip1 antibody detects p21 Cip1 protein at nucleus by immunofluorescent analysis.

Samples: HCT116 cells mock (left) and treated with 30 µM Cisplatin for 24 hrs (right) were fixed in 4% paraformaldehyde at RT for 15 min.

Green: p21 Cip1 protein stained by p21 Cip1 antibody (GTX100444) diluted at 1:1000.

Red: Histone H3S10ph (phospho Ser10), a nucleus marker, stained by Histone H3S10ph (phospho Ser10) antibody [GT921] (GTX630185) diluted at 1:500.

Blue: Hoechst 33342 staining.



GTX100444 WB Image

Sample (30 µg of whole cell lysate)

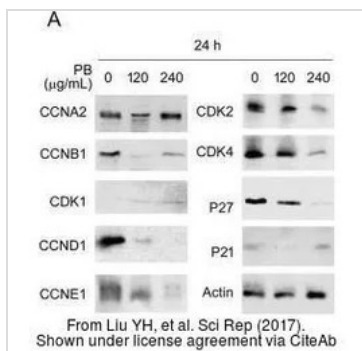
A: HCT116

B: HCT116 treated with 30 µM cisplatin for 24 hr

12% SDS PAGE

GTX100444 diluted at 1:1000

The HRP-conjugated anti-rabbit IgG antibody (GTX213110-01) was used to detect the primary antibody.



GTX100444 WB Image

The data was published in the journal Sci Rep in 2017. [PMID: 28134285](https://doi.org/10.1038/s41598-017-28134-2)



For full product information, images and publications, please visit our [website](http://www.genetex.com).