

SCARA3 antibody [N2C2], Internal

Cat. No. GTX100595

宿主	Rabbit
克隆	Polyclonal
同种型	IgG
实验应用	WB, ICC/IF, IHC-P, IHC
种属反应	Human

引用文献 (2)

实验应用

应用说明

*最佳稀释倍数与浓度应由研究人员确认

Suggested dilution	Recommended dilution
WB	1:500-1:3000
ICC/IF	1:100-1:1000
IHC-P	1:100-1:1000
IHC	Assay dependent

以下为常规应用缩写的中文注解

WB: 免疫印迹

ICC/IF: 细胞染色

IHC-P: 石蜡切片

IHC-Fr: 冰冻切片

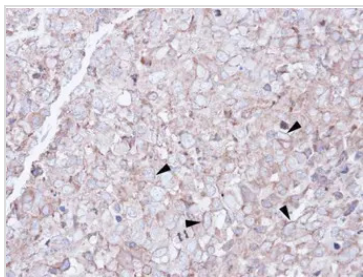
属性

形式	Liquid
存储溶液	0.1M Tris, 0.1M Glycine, 10% Glycerol
保存剂	0.01% Thimerosal
存放说明	Store as concentrated solution. Centrifuge briefly prior to opening vial. For short-term storage (1-2 weeks), store at 4°C. For long-term storage, aliquot and store at -20°C or below. Avoid multiple freeze-thaw cycles.
浓度	0.78 mg/ml (Please refer to the vial label for the specific concentration.)
偶联	Unconjugated
RRID	AB_1951818
注意事项	仅供实验室使用。不适用于人类或动物的任何临床、治疗或诊断用途。不适合动物或人类食用。



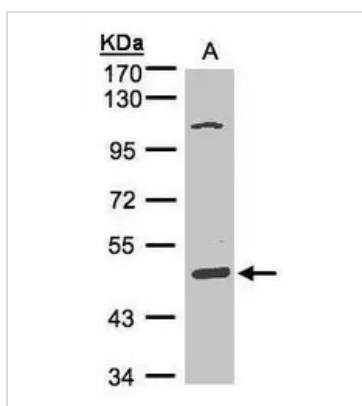
For full product information, images and publications, please visit our [website](#).

產品圖片

**GTX100595 IHC-P Image**

Immunohistochemical analysis of paraffin-embedded CL1-0 xenograft, using SCARA3(GTX100595) antibody at 1:100 dilution.

Antigen Retrieval: Trilogy™ (EDTA based, pH 8.0) buffer, 15min

**GTX100595 WB Image**

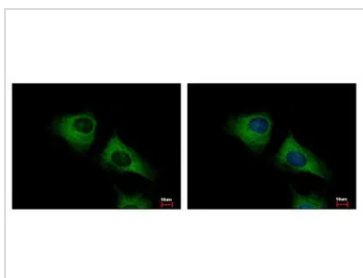
Sample(30 µg of whole cell lysate)

A:Hep G2(GTX27900)

7.5% SDS PAGE

GTX100595 diluted at 1:1000

The HRP-conjugated anti-rabbit IgG antibody (GTX213110-01) was used to detect the primary antibody.

**GTX100595 ICC/IF Image**

SCARA3 antibody [N2C2], Internal detects SCARA3 protein at cytoplasm by immunofluorescent analysis.

Sample: HeLa cells were fixed in -20°C 100% MeOH for 5 min.

Green: SCARA3 protein stained by SCARA3 antibody [N2C2], Internal (GTX100595) diluted at 1:500.

Blue: Hoechst 33343 staining.



For full product information, images and publications, please visit our [website](#).