

PUF60 antibody

Cat. No. GTX102052

宿主	Rabbit
克隆	Polyclonal
同种型	IgG
实验应用	WB, ICC/IF, IHC-P, IHC-Wm
种属反应	Human, Zebrafish

实验应用

应用说明

*最佳稀释倍数与浓度应由研究人员确认

Suggested dilution	Recommended dilution
WB	1:500-1:3000
ICC/IF	1:100-1:1000
IHC-P	1:100-1:1000
IHC-Wm	Assay dependent

以下为常规应用缩写的中文注解

WB: 免疫印迹

ICC/IF: 细胞染色

IHC-P: 石蜡切片

IHC-Fr: 冰冻切片

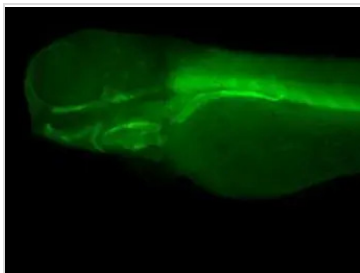
属性

形式	Liquid
存储溶液	0.1M Tris, 0.1M Glycine, 10% Glycerol
保存剂	0.01% Thimerosal
存放说明	Store as concentrated solution. Centrifuge briefly prior to opening vial. For short-term storage (1-2 weeks), store at 4°C. For long-term storage, aliquot and store at -20°C or below. Avoid multiple freeze-thaw cycles.
浓度	0.81 mg/ml (Please refer to the vial label for the specific concentration.)
偶联	Unconjugated
RRID	AB_1951551
注意事项	仅供实验室使用。不适用于人类或动物的任何临床、治疗或诊断用途。不适合动物或人类食用。

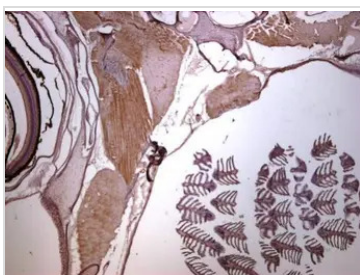


For full product information, images and publications, please visit our [website](#).

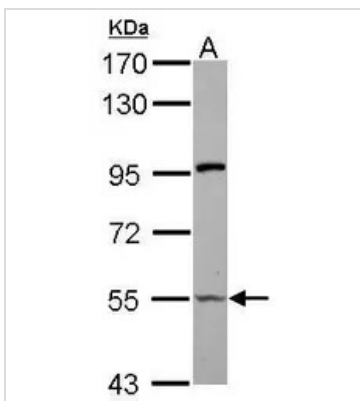
產品圖片

**GTX102052 IHC-Wm Image**

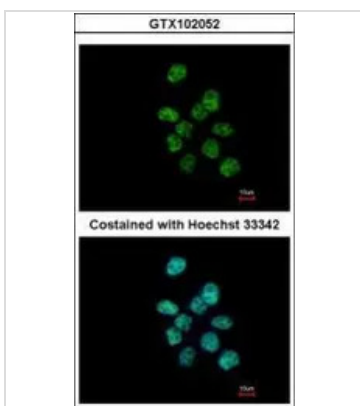
Immunohistochemical analysis (whole mount) of zebrafish embryo, using PUF60 antibody (GTX102052) at 1:200 dilution.

**GTX102052 IHC-P Image**

Immunohistochemical analysis of paraffin-embedded zebrafish tissue, using PUF60 antibody (GTX102052) at 1:300 dilution.

**GTX102052 WB Image**

Sample (30 µg of whole cell lysate)
A: zebrafish brain
7.5% SDS PAGE
GTX102052 diluted at 1:500

**GTX102052 ICC/IF Image**

Immunofluorescence analysis of paraformaldehyde-fixed A431, using PUF60(GTX102052) antibody at 1:500 dilution.



For full product information, images and publications, please visit our [website](#).