

MRCK alpha antibody

Cat. No. GTX102598

宿主	Rabbit
克隆	Polyclonal
同种型	IgG
实验应用	WB, ICC/IF, IHC-P
种属反应	Human

实验应用

应用说明

*最佳稀释倍数与浓度应由研究人员确认

Suggested dilution	Recommended dilution
WB	1:500-1:3000
ICC/IF	1:100-1:1000
IHC-P	1:100-1:1000

以下为常规应用缩写的中文注解

WB: 免疫印迹

ICC/IF: 细胞染色

IHC-P: 石蜡切片

IHC-Fr: 冰冻切片

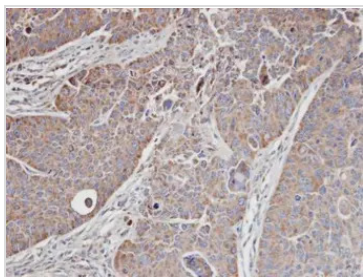
属性

形式	Liquid
存储溶液	PBS, 40% Glycerol
保存剂	0.01% Thimerosal
存放说明	Store as concentrated solution. Centrifuge briefly prior to opening vial. For short-term storage (1-2 weeks), store at 4°C. For long-term storage, aliquot and store at -20°C or below. Avoid multiple freeze-thaw cycles.
浓度	2 mg/ml (Please refer to the vial label for the specific concentration.)
偶联	Unconjugated
RRID	AB_1240609
注意事项	仅供实验室使用。不适用于人类或动物的任何临床, 治疗或诊断用途。不适合动物或人类食用。



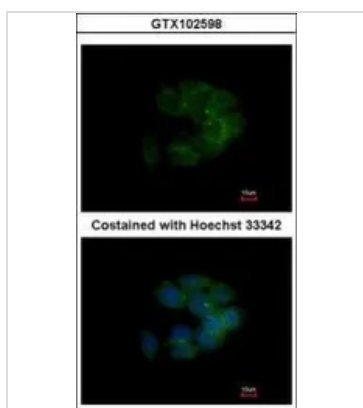
For full product information, images and publications, please visit our [website](#).

產品圖片

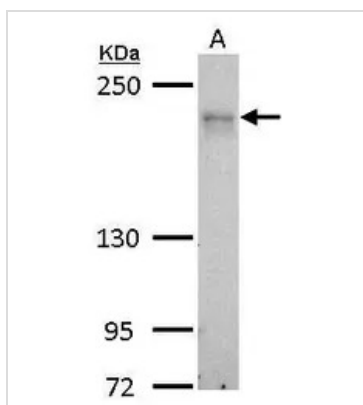
**GTX102598 IHC-P Image**

Immunohistochemical analysis of paraffin-embedded SW480 xenograft, using MRCK alpha(GTX102598) antibody at 1:100 dilution.

Antigen Retrieval: Trilogy™ (EDTA based, pH 8.0) buffer, 15min

**GTX102598 ICC/IF Image**

Immunofluorescence analysis of methanol-fixed HCT116, using MRCK alpha(GTX102598) antibody at 1:500 dilution.

**GTX102598 WB Image**

MRCK alpha antibody detects CDC42BPA protein by Western blot analysis.

A. 30 µg U87-MG whole cell lysate/extract

5 % SDS-PAGE

MRCK alpha antibody (GTX102598) dilution: 1:1000



For full product information, images and publications, please visit our [website](#).