

PTER antibody

Cat. No. GTX102860

宿主	Rabbit
克隆	Polyclonal
同种型	IgG
实验应用	WB, ICC/IF, IHC-P
种属反应	Human, Mouse

引用文献 (1)

实验应用

应用说明

*最佳稀释倍数与浓度应由研究人员确认

Suggested dilution	Recommended dilution
WB	1:500-1:3000
ICC/IF	1:100-1:1000
IHC-P	1:100-1:1000

以下为常规应用缩写的中文注解

WB: 免疫印迹

ICC/IF: 细胞染色

IHC-P: 石蜡切片

IHC-Fr: 冰冻切片

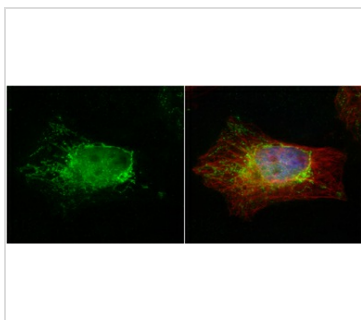
属性

形式	Liquid
存储溶液	0.1M Tris, 0.1M Glycine, 10% Glycerol
保存剂	0.01% Thimerosal
存放说明	Store as concentrated solution. Centrifuge briefly prior to opening vial. For short-term storage (1-2 weeks), store at 4°C. For long-term storage, aliquot and store at -20°C or below. Avoid multiple freeze-thaw cycles.
浓度	0.96 mg/ml (Please refer to the vial label for the specific concentration.)
偶联	Unconjugated
RRID	AB_2037796
注意事项	仅供实验室使用。不适用于人类或动物的任何临床, 治疗或诊断用途。不适合动物或人类食用。



For full product information, images and publications, please visit our [website](#).

產品圖片



GTX102860 ICC/IF Image

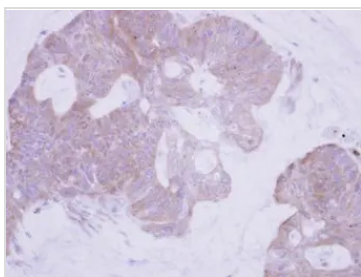
PTER antibody detects PTER protein at cytoplasm by immunofluorescent analysis.

Sample: HeLa cells were fixed in 4% paraformaldehyde at RT for 15 min.

Green: PTER protein stained by PTER antibody (GTX102860) diluted at 1:500.

Red: alpha Tubulin, a cytoskeleton marker, stained by alpha Tubulin antibody [B-5-1-2] (GTX11304) diluted at 1:10000.

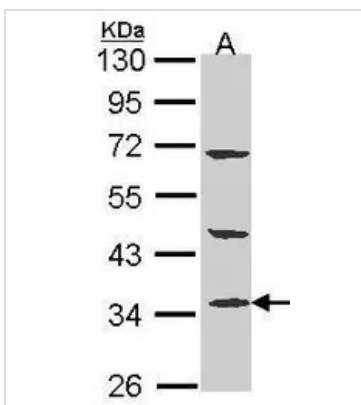
Blue: Hoechst 33342 staining.



GTX102860 IHC-P Image

Immunohistochemical analysis of paraffin-embedded human colon carcinoma, using PTER(GTX102860) antibody at 1:500 dilution.

Antigen Retrieval: Trilogy™ (EDTA based, pH 8.0) buffer, 15min



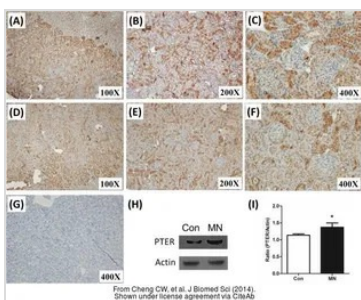
GTX102860 WB Image

Sample (30 ug of whole cell lysate)

A: A431 (GTX27909)

10% SDS PAGE

GTX102860 diluted at 1:1000



GTX102860 IHC-P Image

The data was published in the journal J Biomed Sci in 2014. [PMID: 24750591](https://pubmed.ncbi.nlm.nih.gov/24750591/)



For full product information, images and publications, please visit our [website](http://www.genetex.com).