

Dengue virus Capsid protein antibody

Cat. No. GTX103343

宿主	Rabbit
克隆	Polyclonal
同种型	IgG
实验应用	WB, ICC/IF, FCM
种属反应	Dengue virus 2

引用文献 (23)

实验应用

应用说明

*最佳稀释倍数与浓度应由研究人员确认

Suggested dilution	Recommended dilution
WB	1:500-1:3000
ICC/IF	1:1000-1:2000
FCM	Assay dependent

以下为常规应用缩写的中文注解

WB: 免疫印迹

ICC/IF: 细胞染色

IHC-P: 石蜡切片

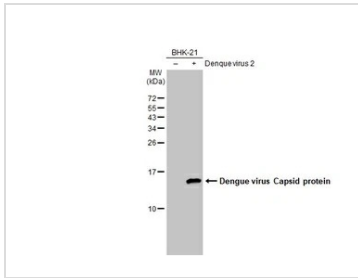
IHC-Fr: 冰冻切片

属性

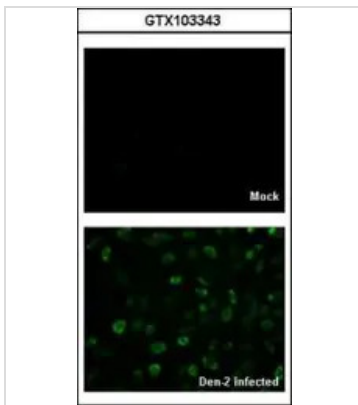
形式	Liquid
存储溶液	PBS, 1% BSA, 20% Glycerol
保存剂	0.025% ProClin 300
存放说明	Store as concentrated solution. Centrifuge briefly prior to opening vial. For short-term storage (1-2 weeks), store at 4°C. For long-term storage, aliquot and store at -20°C or below. Avoid multiple freeze-thaw cycles.
浓度	0.16 mg/ml (Please refer to the vial label for the specific concentration.)
偶联	Unconjugated
RRID	AB_1240697
注意事项	仅供实验室使用。不适用于人类或动物的任何临床, 治疗或诊断用途。不适合动物或人类食用。



For full product information, images and publications, please visit our [website](#).

產品图片

GTX103343 WB Image

Non-infected (-) and infected (+) BHK-21 whole cell extracts (30 µg) were separated by 15% SDS-PAGE, and the membrane was blotted with Dengue virus Capsid protein antibody (GTX103343) diluted at 1:1000. The HRP-conjugated anti-rabbit IgG antibody (GTX213110-01) was used to detect the primary antibody.


GTX103343 ICC/IF Image

GTX103343 IF Image Immunofluorescence analysis of Denque virus 2-infected BHK-21, using Capsid Protein (Dengue virus 2) antibody (GTX103343) at 1:2000 dilution.



For full product information, images and publications, please visit our [website](#).