

ZNF45 antibody [N2C3]

Cat. No. GTX103451

宿主	Rabbit
克隆	Polyclonal
同种型	IgG
实验应用	WB, ICC/IF, IHC-P
种属反应	Human

实验应用

应用说明

*最佳稀释倍数与浓度应由研究人员确认

Suggested dilution	Recommended dilution
WB	1:500-1:3000
ICC/IF	1:100-1:1000
IHC-P	1:100-1:1000

以下为常规应用缩写的中文注解

WB: 免疫印迹

ICC/IF: 细胞染色

IHC-P: 石蜡切片

IHC-Fr: 冰冻切片

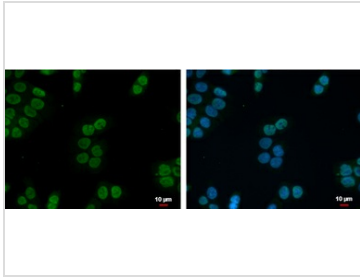
属性

形式	Liquid
存储溶液	0.1M Tris, 0.1M Glycine, 10% Glycerol
保存剂	0.01% Thimerosal
存放说明	Store as concentrated solution. Centrifuge briefly prior to opening vial. For short-term storage (1-2 weeks), store at 4°C. For long-term storage, aliquot and store at -20°C or below. Avoid multiple freeze-thaw cycles.
浓度	0.5 mg/ml (Please refer to the vial label for the specific concentration.)
偶联	Unconjugated
RRID	AB_1952686
注意事项	仅供实验室使用。不适用于人类或动物的任何临床, 治疗或诊断用途。不适合动物或人类食用。



For full product information, images and publications, please visit our [website](#).

產品圖片

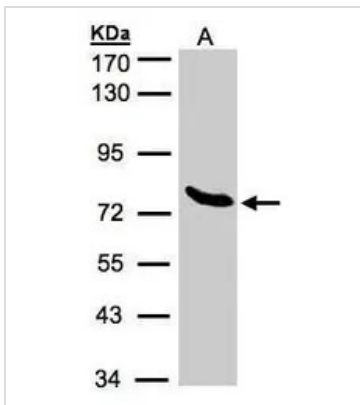
**GTX103451 ICC/IF Image**

ZNF45 antibody [N2C3] detects ZNF45 protein at nucleus by immunofluorescent analysis.

Sample: HCT116 cells were fixed in 4% paraformaldehyde at RT for 15 min.

Green: ZNF45 protein stained by ZNF45 antibody [N2C3] (GTX103451) diluted at 1:500.

Blue: Hoechst 33342 staining.

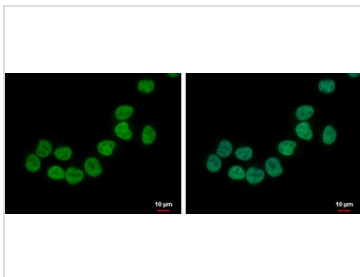
**GTX103451 WB Image**

Sample(30 μg of whole cell lysate)

A:293T

7.5% SDS PAGE

GTX103451 diluted at 1:2000

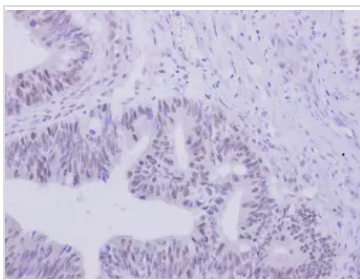
**GTX103451 ICC/IF Image**

ZNF45 antibody [N2C3] detects ZNF45 protein at nucleus by immunofluorescent analysis.

Sample: A375 cells were fixed in 4% paraformaldehyde at RT for 15 min.

Green: ZNF45 protein stained by ZNF45 antibody [N2C3] (GTX103451) diluted at 1:500.

Blue: Hoechst 33342 staining.

**GTX103451 IHC-P Image**

ZNF45 antibody [N2C3] detects ZNF45 protein at nucleus on human colon carcinoma by immunohistochemical analysis.

Sample: Paraffin-embedded human colon carcinoma.

ZNF45 antibody [N2C3] (GTX103451) dilution: 1:250.

Antigen Retrieval: Trilogy™ (EDTA based, pH 8.0) buffer, 15min



For full product information, images and publications, please visit our [website](#).