

ECH1 antibody [N1C3]

Cat. No. GTX103552

宿主	Rabbit
克隆	Polyclonal
同种型	IgG
实验应用	WB, IHC-P
种属反应	Human, Mouse

实验应用

应用说明

*最佳稀释倍数与浓度应由研究人员确认

Suggested dilution	Recommended dilution
WB	1:500-1:3000
IHC-P	1:100-1:1000

以下为常规应用缩写的中文注解

WB: 免疫印迹

ICC/IF: 细胞染色

IHC-P: 石蜡切片

IHC-Fr: 冰冻切片

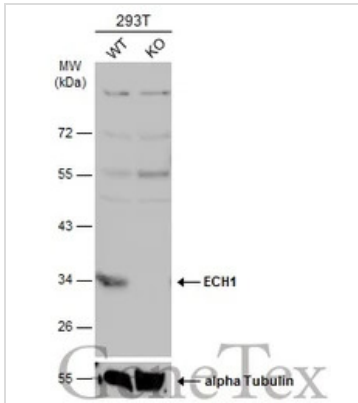
属性

形式	Liquid
存储溶液	PBS, 10% Glycerol
保存剂	0.01% Thimerosal
存放说明	Store as concentrated solution. Centrifuge briefly prior to opening vial. For short-term storage (1-2 weeks), store at 4°C. For long-term storage, aliquot and store at -20°C or below. Avoid multiple freeze-thaw cycles.
浓度	1 mg/ml (Please refer to the vial label for the specific concentration.)
偶联	Unconjugated
RRID	AB_2036818
注意事项	仅供实验室使用。不适用于人类或动物的任何临床, 治疗或诊断用途。不适合动物或人类食用。

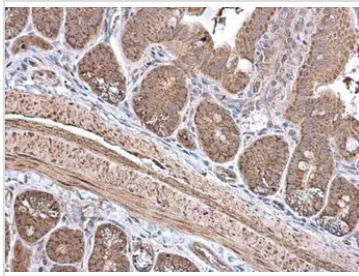


For full product information, images and publications, please visit our [website](#).

產品圖片

**GTX103552 WB Image**

Wild-type (WT) and ECH1 knockout (KO) 293T cell extracts (30 µg) were separated by 10% SDS-PAGE, and the membrane was blotted with ECH1 antibody (GTX103552) diluted at 1:1000. The HRP-conjugated anti-rabbit IgG antibody (GTX213110-01) was used to detect the primary antibody.

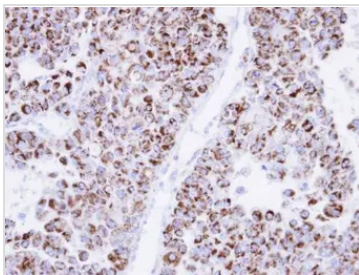
**GTX103552 IHC-P Image**

ECH1 antibody [N1C3] detects ECH1 protein at cytoplasm in mouse intestine by immunohistochemical analysis.

Sample: Paraffin-embedded mouse intestine.

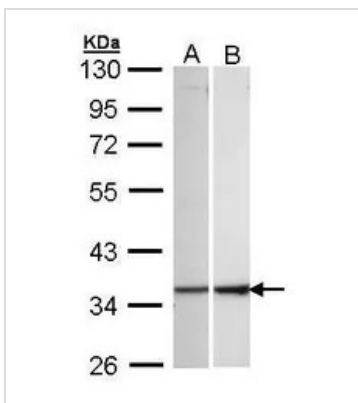
ECH1 antibody [N1C3] (GTX103552) diluted at 1:500.

Antigen Retrieval: Citrate buffer, pH 6.0, 15 min

**GTX103552 IHC-P Image**

Immunohistochemical analysis of paraffin-embedded OV90 xenograft, using ECH1(GTX103552) antibody at 1:500 dilution.

Antigen Retrieval: Citrate buffer, pH 6.0, 15 min

**GTX103552 WB Image**

Sample (30 ug of whole cell lysate)

A: 293T

B: Hep G2 (GTX27900)

10% SDS PAGE

GTX103552 diluted at 1:1000



For full product information, images and publications, please visit our [website](#).