

## L3MBTL1 antibody

Cat. No. GTX103793

宿主	Rabbit
克隆	Polyclonal
同种型	IgG
实验应用	WB, ICC/IF, IHC-Fr
种属反应	Human, Caenorhabditis elegans

引用文献 (1)

## 实验应用

## 应用说明

\*最佳稀释倍数与浓度应由研究人员确认

Suggested dilution	Recommended dilution
WB	1:500-1:3000
ICC/IF	1:100-1:1000
IHC-Fr	Assay dependent

以下为常规应用缩写的中文注解

WB: 免疫印迹

ICC/IF: 细胞染色

IHC-P: 石蜡切片

IHC-Fr: 冰冻切片

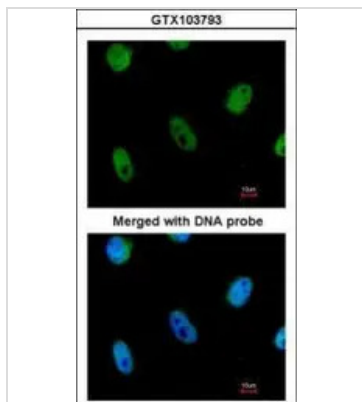
## 属性

形式	Liquid
存储溶液	0.1M Tris, 0.1M Glycine, 10% Glycerol
保存剂	0.01% Thimerosal
存放说明	Store as concentrated solution. Centrifuge briefly prior to opening vial. For short-term storage (1-2 weeks), store at 4°C. For long-term storage, aliquot and store at -20°C or below. Avoid multiple freeze-thaw cycles.
浓度	1 mg/ml (Please refer to the vial label for the specific concentration.)
偶联	Unconjugated
RRID	AB_1950656
注意事项	仅供实验室使用。不适用于人类或动物的任何临床, 治疗或诊断用途。不适合动物或人类食用。

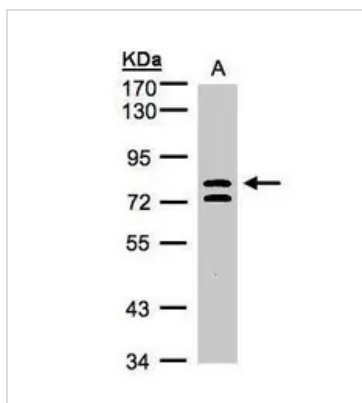


For full product information, images and publications, please visit our [website](#).

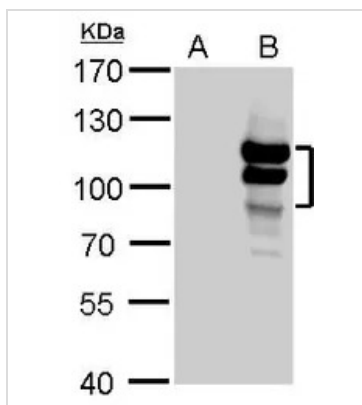
## 產品圖片

**GTX103793 ICC/IF Image**

Immunofluorescence analysis of paraformaldehyde-fixed HeLa, using L3MBTL(GTX103793) antibody at 1:200 dilution.

**GTX103793 WB Image**

Sample(30 ug whole cell lysate)  
A:HeLa S3(GTX14654)  
7.5% SDS PAGE  
GTX103793 diluted at 1:1000

**GTX103793 WB Image**

L3MBTL antibody detects L3MBTL protein by Western blot analysis.  
A. 30  $\mu$ g 293T whole cell lysate/extract  
B. 30  $\mu$ g whole cell lysate/extract of human L3MBTL-transfected 293T cells  
7.5 % SDS-PAGE  
L3MBTL antibody (GTX103793) dilution: 1:5000



For full product information, images and publications, please visit our [website](#).