

PRPS2 antibody [N1C3]

Cat. No. GTX104048

| | |
|------|-------------------|
| 宿主 | Rabbit |
| 克隆 | Polyclonal |
| 同种型 | IgG |
| 实验应用 | WB, ICC/IF, IHC-P |
| 种属反应 | Human |

实验应用

应用说明

*最佳稀释倍数与浓度应由研究人员确认

| Suggested dilution | Recommended dilution |
|--------------------|----------------------|
| WB | 1:500-1:3000 |
| ICC/IF | 1:100-1:1000 |
| IHC-P | 1:100-1:1000 |

以下为常规应用缩写的中文注解

WB: 免疫印迹

ICC/IF: 细胞染色

IHC-P: 石蜡切片

IHC-Fr: 冰冻切片

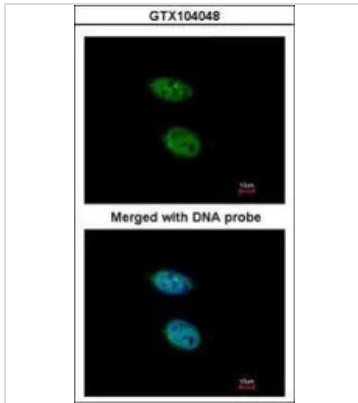
属性

| | |
|------|--|
| 形式 | Liquid |
| 存储溶液 | 0.1M Tris, 0.1M Glycine, 10% Glycerol |
| 保存剂 | 0.01% Thimerosal |
| 存放说明 | Store as concentrated solution. Centrifuge briefly prior to opening vial. For short-term storage (1-2 weeks), store at 4°C. For long-term storage, aliquot and store at -20°C or below. Avoid multiple freeze-thaw cycles. |
| 浓度 | 0.91 mg/ml (Please refer to the vial label for the specific concentration.) |
| 偶联 | Unconjugated |
| RRID | AB_1951475 |
| 注意事项 | 仅供实验室使用。不适用于人类或动物的任何临床, 治疗或诊断用途。不适合动物或人类食用。 |

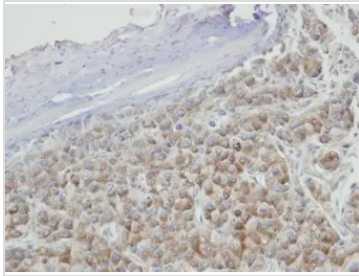


For full product information, images and publications, please visit our [website](#).

產品圖片

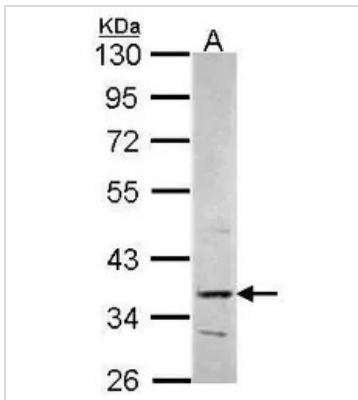
**GTX104048 ICC/IF Image**

Immunofluorescence analysis of paraformaldehyde-fixed HeLa, using PRPS2(GTX104048) antibody at 1:200 dilution.

**GTX104048 IHC-P Image**

Immunohistochemical analysis of paraffin-embedded Hep3B xenograft, using PRPS2(GTX104048) antibody at 1:100 dilution.

Antigen Retrieval: Trilogy™ (EDTA based, pH 8.0) buffer, 15min

**GTX104048 WB Image**

Sample (30 ug of whole cell lysate)

A: Hep G2 (GTX27900)

10% SDS PAGE

PRPS2 antibody

GTX104048 diluted at 1:1000



For full product information, images and publications, please visit our [website](#).