

PRPF39 antibody [N2C1], Internal

Cat. No. GTX104949

宿主	Rabbit
克隆	Polyclonal
同种型	IgG
实验应用	WB, IHC-P
种属反应	Human

引用文献 (1)

实验应用

应用说明

*最佳稀释倍数与浓度应由研究人员确认

Suggested dilution	Recommended dilution
WB	1:500-1:10000
IHC-P	1:100-1:1000

以下为常规应用缩写的中文注解

WB: 免疫印迹

ICC/IF: 细胞染色

IHC-P: 石蜡切片

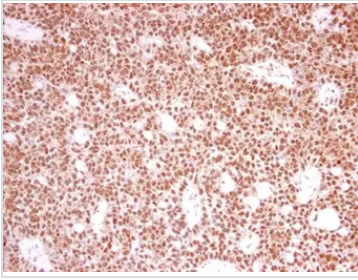
IHC-Fr: 冰冻切片

属性

形式	Liquid
存储溶液	PBS, 1% BSA, 20% Glycerol
保存剂	0.01% Thimerosal
存放说明	Store as concentrated solution. Centrifuge briefly prior to opening vial. For short-term storage (1-2 weeks), store at 4°C. For long-term storage, aliquot and store at -20°C or below. Avoid multiple freeze-thaw cycles.
浓度	0.67 mg/ml (Please refer to the vial label for the specific concentration.)
偶联	Unconjugated
RRID	AB_2037773
注意事项	仅供实验室使用。不适用于人类或动物的任何临床, 治疗或诊断用途。不适合动物或人类食用。

For full product information, images and publications, please visit our [website](#).

產品圖片

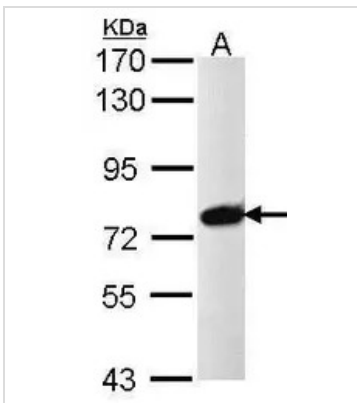
**GTX104949 IHC-P Image**

PRPF39 antibody [N2C1], Internal detects PRPF39 protein at nucleus in human lung carcinoma by immunohistochemical analysis.

Sample: Paraffin-embedded human lung carcinoma.

PRPF39 antibody [N2C1], Internal (GTX104949) diluted at 1:250.

Antigen Retrieval: Citrate buffer, pH 6.0, 15 min

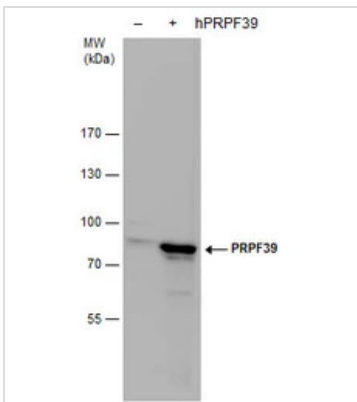
**GTX104949 WB Image**

Sample (30 ug of whole cell lysate)

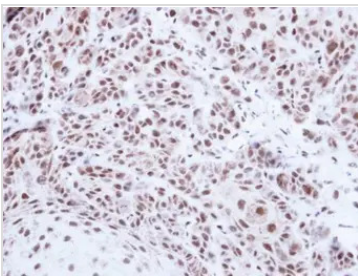
A: Raji

7.5% SDS PAGE

GTX104949 diluted at 1:1000

**GTX104949 WB Image**

PRPF39 antibody detects PRPF39 protein by western blot analysis. Non-transfected (-) and PRPF39-transfected (+, including Flag-tag) 293T whole cell extracts (30 µg) were separated by 7.5% SDS-PAGE, and the membrane was blotted with PRPF39 antibody (GTX104949) diluted by 1:5000.

**GTX104949 IHC-P Image**

Immunohistochemical analysis of paraffin-embedded Cal27 xenograft, using PRPF39(GTX104949) antibody at 1:500 dilution.

Antigen Retrieval: Citrate buffer, pH 6.0, 15 min



For full product information, images and publications, please visit our [website](http://www.genetex.com).