

## OCT1 antibody

Cat. No. GTX105202

宿主	Rabbit
克隆	Polyclonal
同种型	IgG
实验应用	WB, ICC/IF, IHC-P, IP
种属反应	Human, Rat

引用文献 ( 3 )

## 实验应用

## 应用说明

\*最佳稀释倍数与浓度应由研究人员确认

Suggested dilution	Recommended dilution
WB	1:500-1:3000
ICC/IF	1:100-1:1000
IHC-P	1:100-1:1000
IP	1:100-1:500

以下为常规应用缩写的中文注解

WB: 免疫印迹

ICC/IF: 细胞染色

IHC-P: 石蜡切片

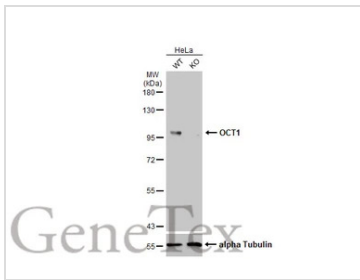
IHC-Fr: 冰冻切片

## 属性

形式	Liquid
存储溶液	PBS, 1% BSA, 20% Glycerol
保存剂	0.025% ProClin 300
存放说明	Store as concentrated solution. Centrifuge briefly prior to opening vial. For short-term storage (1-2 weeks), store at 4°C. For long-term storage, aliquot and store at -20°C or below. Avoid multiple freeze-thaw cycles.
浓度	0.49 mg/ml (Please refer to the vial label for the specific concentration.)
偶联	Unconjugated
RRID	AB_11173475
注意事项	仅供实验室使用。不适用于人类或动物的任何临床、治疗或诊断用途。不适合动物或人类食用。

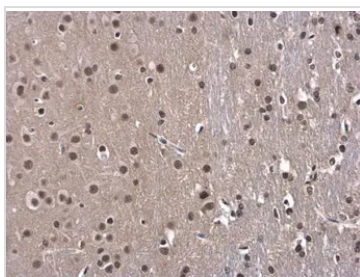
For full product information, images and publications, please visit our [website](#).

## 產品圖片



### GTX105202 WB Image

Wild-type (WT) and OCT1 knockout (KO) HeLa cell extracts (30 µg) were separated by 7.5% SDS-PAGE, and the membrane was blotted with OCT1 antibody (GTX105202) diluted at 1:2000. The HRP-conjugated anti-rabbit IgG antibody (GTX213110-01) was used to detect the primary antibody.



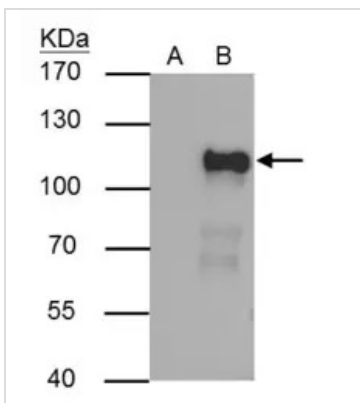
### GTX105202 IHC-P Image

OCT1 antibody detects OCT1 protein at nucleus in rat brain by immunohistochemical analysis.

Sample: Paraffin-embedded rat brain.

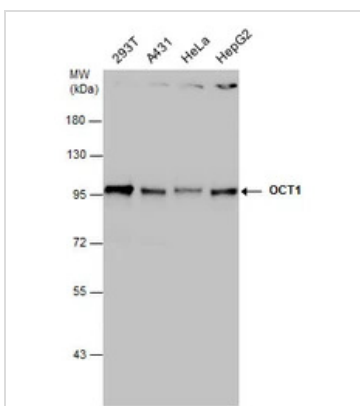
OCT1 antibody (GTX105202) diluted at 1:500.

Antigen Retrieval: Citrate buffer, pH 6.0, 15 min



### GTX105202 IP Image

OCT1 antibody immunoprecipitates OCT1 protein in IP experiments. IP Sample: 293T whole cell lysate/extract A : Control with 2.5 µg of pre-immune rabbit IgG B : Immunoprecipitation of OCT1 by 2.5 µg of OCT1 antibody (GTX105202) 7.5% SDS-PAGE The immunoprecipitated OCT1 protein was detected by OCT1 antibody (GTX105202) diluted at 1 : 1000. EasyBlot anti-rabbit IgG (HRP) (GTX221666-01) was used as a secondary reagent.



### GTX105202 WB Image

Various whole cell extracts (30 µg) were separated by 7.5% SDS-PAGE, and the membrane was blotted with OCT1 antibody (GTX105202) diluted at 1:1000.



For full product information, images and publications, please visit our [website](https://www.genetex.com).