

## c-Abl antibody [ABL-148]

**Cat. No. GTX10528**

宿主	Mouse
克隆	Monoclonal
同种型	IgG2a
实验应用	WB, ICC/IF, FCM, IP
种属反应	Human, Mouse, Rat, Bovine, Monkey

## 实验应用

## 应用说明

\*最佳稀释倍数与浓度应由研究人员确认

Suggested dilution	Recommended dilution
WB	1:2,000
ICC/IF	Assay dependent
FCM	Assay dependent
IP	Assay dependent

以下为常规应用缩写的中文注解

WB: 免疫印迹

ICC/IF: 细胞染色

IHC-P: 石蜡切片

IHC-Fr: 冰冻切片

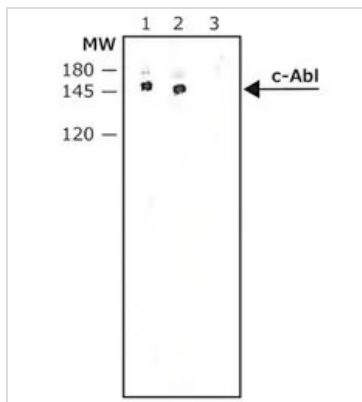
## 属性

形式	Liquid
存储溶液	Ascites
保存剂	No preservatives
存放说明	Store as concentrated solution. Centrifuge briefly prior to opening vial. For short-term storage (1-2 weeks), store at 4°C. For long-term storage, aliquot and store at -20°C or below. Avoid multiple freeze-thaw cycles.
偶联	Unconjugated
注意事项	仅供实验室使用。不适用于人类或动物的任何临床，治疗或诊断用途。不适合动物或人类食用。



For full product information, images and publications, please visit our [website](#).

## 產品圖片

**GTX10528 WB Image**

WB analysis of G361 whole cell lysate using GTX10528 c-Abl antibody [ABL-148].

Lane 1 : 1:4000 dilution

Lane 2 : 1:112000 dilution

Lane 3 : Negative control



For full product information, images and publications, please visit our [website](#).