

Staufen antibody

Cat. No. GTX106566

宿主	Rabbit
克隆	Polyclonal
同种型	IgG
实验应用	WB, ICC/IF, IP
种属反应	Human, Mouse

引用文献 (2)

实验应用

应用说明

*最佳稀释倍数与浓度应由研究人员确认

Suggested dilution	Recommended dilution
WB	1:500-1:3000
ICC/IF	1:100-1:1000
IP	1:500-1:3000

以下为常规应用缩写的中文注解

WB: 免疫印迹

ICC/IF: 细胞染色

IHC-P: 石蜡切片

IHC-Fr: 冰冻切片

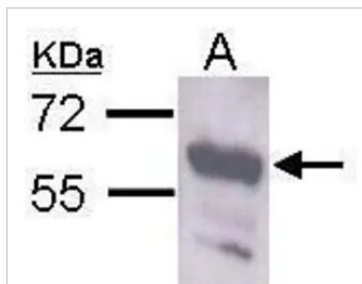
属性

形式	Liquid
存储溶液	PBS, 20% Glycerol
保存剂	0.025% ProClin 300
存放说明	Store as concentrated solution. Centrifuge briefly prior to opening vial. For short-term storage (1-2 weeks), store at 4°C. For long-term storage, aliquot and store at -20°C or below. Avoid multiple freeze-thaw cycles.
浓度	0.93 mg/ml (Please refer to the vial label for the specific concentration.)
偶联	Unconjugated
RRID	AB_1952044
注意事项	仅供实验室使用。不适用于人类或动物的任何临床, 治疗或诊断用途。不适合动物或人类食用。



For full product information, images and publications, please visit our [website](#).

產品圖片



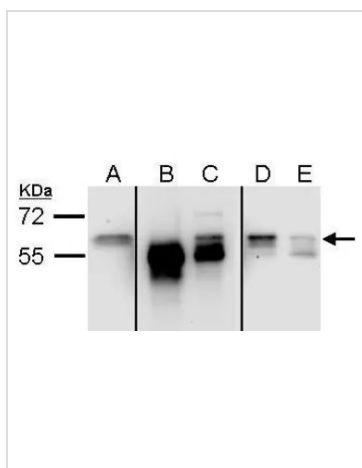
GTX106566 WB Image

Sample (30 µg of whole cell lysate)

A: Neuro2A

GTX106566 diluted at 1:1000

The HRP-conjugated anti-rabbit IgG antibody (GTX213110-01) was used to detect the primary antibody.



GTX106566 IP Image

Sample (µg of whole cell lysate)

A: 293 (input)

B: control rabbit IgG-IP

C: Stau1-IP (GTX106566)

D: Post-IP lysate from control rabbit IgG-IP

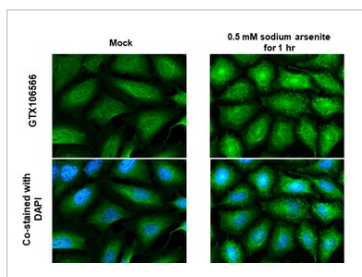
E: Post-IP lysate from Stau1-IP

7.5% SDS PAGE

GTX106566 diluted at 1:3000

Image courtesy of Dr. Samantha Whitman (Laboratory of Dr. Donna Zhang, U of Arizona Pharmacology & Toxicology Department).

The HRP-conjugated anti-rabbit IgG antibody (GTX213110-01) was used to detect the primary antibody.



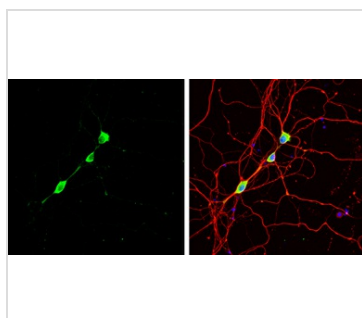
GTX106566 ICC/IF Image

Staufen antibody detects Staufen protein by immunofluorescent analysis.

Sample: Mock and treated HeLa cells were fixed in 4% paraformaldehyde at RT for 15 min.

Green: Staufen stained by Staufen antibody (GTX106566) diluted at 1:500.

Blue: Fluoroshield with DAPI (GTX30920).



GTX106566 ICC/IF Image

Staufen antibody detects Staufen protein by immunofluorescent analysis.

Sample: DIV9 rat E18 primary hippocampal neuron cells were fixed in 4% paraformaldehyde at RT for 15 min.

Green: Staufen stained by Staufen antibody (GTX106566) diluted at 1:500.

Red: beta Tubulin 3/ Tuj1, stained by beta Tubulin 3/ Tuj1 antibody [GT11710] (GTX631836) diluted at 1:500.

Blue: Fluoroshield with DAPI (GTX30920).



For full product information, images and publications, please visit our [website](https://www.genetex.com).