

## ACTL8 antibody

Cat. No. GTX106696

宿主	Rabbit
克隆	Polyclonal
同种型	IgG
实验应用	WB, ICC/IF, IHC-P
种属反应	Human

## 实验应用

## 应用说明

\*最佳稀释倍数与浓度应由研究人员确认

Suggested dilution	Recommended dilution
WB	1:500-1:3000
ICC/IF	1:100-1:1000
IHC-P	1:100-1:1000

以下为常规应用缩写的中文注解

WB: 免疫印迹

ICC/IF: 细胞染色

IHC-P: 石蜡切片

IHC-Fr: 冰冻切片

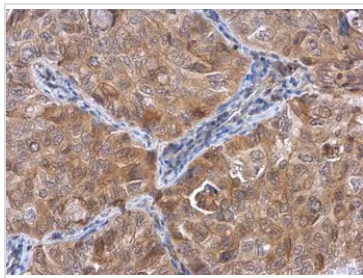
## 属性

形式	Liquid
存储溶液	0.1M Tris, 0.1M Glycine, 10% Glycerol
保存剂	0.01% Thimerosal
存放说明	Store as concentrated solution. Centrifuge briefly prior to opening vial. For short-term storage (1-2 weeks), store at 4°C. For long-term storage, aliquot and store at -20°C or below. Avoid multiple freeze-thaw cycles.
浓度	0.71 mg/ml (Please refer to the vial label for the specific concentration.)
偶联	Unconjugated
RRID	AB_2036156
注意事项	仅供实验室使用。不适用于人类或动物的任何临床, 治疗或诊断用途。不适合动物或人类食用。



For full product information, images and publications, please visit our [website](#).

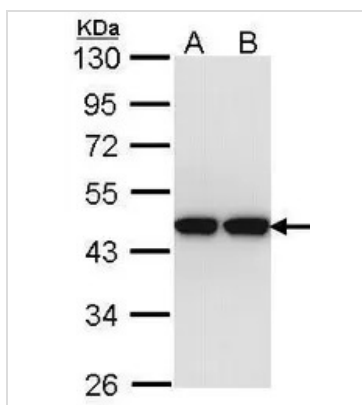
## 產品圖片

**GTX106696 IHC-P Image**

ACTL8 antibody detects ACTL8 protein at cytoplasm in human lung cancer by immunohistochemical analysis.

Sample: Paraffin-embedded human lung cancer.  
ACTL8 antibody (GTX106696) diluted at 1:500.

Antigen Retrieval: Citrate buffer, pH 6.0, 15 min

**GTX106696 WB Image**

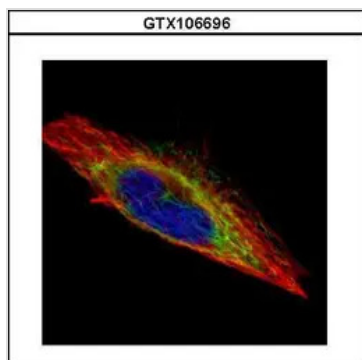
Sample (30 ug of whole cell lysate)

A: Hep G2 (GTX27900)

B: Molt-4 (GTX27912)

10% SDS PAGE

GTX106696 diluted at 1:1000

**GTX106696 ICC/IF Image**

Confocal immunofluorescence analysis (Olympus FV10i) of methanol-fixed HeLa, using ACTL8(GTX106696) antibody (Green) at 1:500 dilution. Alpha-tubulin filaments were labeled with GTX11304 (Red) at 1:2000.



For full product information, images and publications, please visit our [website](#).