

SLC25A33 antibody [N3C3]

Cat. No. GTX106785

宿主	Rabbit
克隆	Polyclonal
同种型	IgG
实验应用	WB, IHC-P
种属反应	Human

引用文献 (1)

实验应用

应用说明

*最佳稀释倍数与浓度应由研究人员确认

Suggested dilution	Recommended dilution
WB	1:500-1:3000
IHC-P	1:100-1:1000

以下为常规应用缩写的中文注解

WB: 免疫印迹

ICC/IF: 细胞染色

IHC-P: 石蜡切片

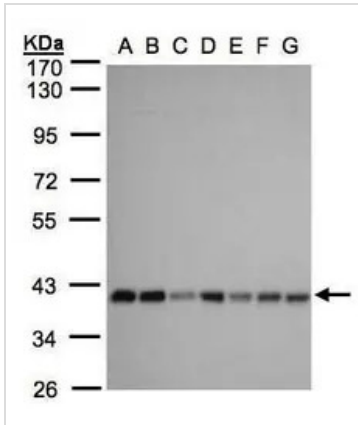
IHC-Fr: 冰冻切片

属性

形式	Liquid
存储溶液	0.1M Tris, 0.1M Glycine, 10% Glycerol
保存剂	0.01% Thimerosal
存放说明	Store as concentrated solution. Centrifuge briefly prior to opening vial. For short-term storage (1-2 weeks), store at 4°C. For long-term storage, aliquot and store at -20°C or below. Avoid multiple freeze-thaw cycles.
浓度	1 mg/ml (Please refer to the vial label for the specific concentration.)
偶联	Unconjugated
RRID	AB_1951929
注意事项	仅供实验室使用。不适用于人类或动物的任何临床, 治疗或诊断用途。不适合动物或人类食用。

For full product information, images and publications, please visit our [website](#).

產品圖片



GTX106785 WB Image

Sample(30 ug whole cell lysate)

A: 293T

B: A431 (GTX27909)

C: H1299

D: HeLa S3 (GTX14654)

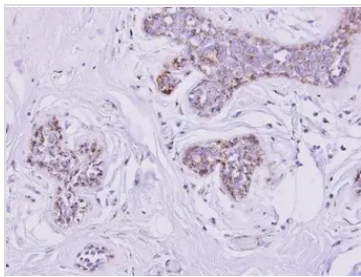
E: Hep G2 (GTX27900)

F: MOLT4 (GTX27912)

G: Raji (GTX27908)

10% SDS PAGE

GTX106785 diluted at 1:1000



GTX106785 IHC-P Image

Immunohistochemical analysis of paraffin-embedded SAOS-2 xenograft, using SLC25A33(GTX106785) antibody at 1:500 dilution.

Antigen Retrieval: Trilogy™ (EDTA based, pH 8.0) buffer, 15min



For full product information, images and publications, please visit our [website](#).