

## MEK6 antibody [N1C3]

Cat. No. GTX107445

宿主	Rabbit
克隆	Polyclonal
同种型	IgG
实验应用	WB, ICC/IF, IHC-P
种属反应	Human, Mouse

引用文献 (1)

## 实验应用

## 应用说明

\*最佳稀释倍数与浓度应由研究人员确认

Suggested dilution	Recommended dilution
WB	1:500-1:3000
ICC/IF	1:100-1:1000
IHC-P	1:100-1:1000

以下为常规应用缩写的中文注解

WB: 免疫印迹

ICC/IF: 细胞染色

IHC-P: 石蜡切片

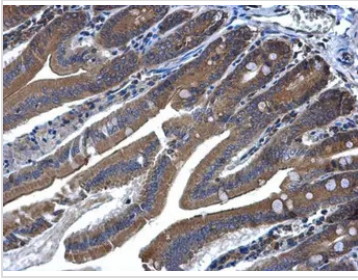
IHC-Fr: 冰冻切片

## 属性

形式	Liquid
存储溶液	0.1M Tris, 0.1M Glycine, 10% Glycerol
保存剂	0.01% Thimerosal
存放说明	Store as concentrated solution. Centrifuge briefly prior to opening vial. For short-term storage (1-2 weeks), store at 4°C. For long-term storage, aliquot and store at -20°C or below. Avoid multiple freeze-thaw cycles.
浓度	0.31 mg/ml (Please refer to the vial label for the specific concentration.)
偶联	Unconjugated
RRID	AB_1950862
注意事项	仅供实验室使用。不适用于人类或动物的任何临床, 治疗或诊断用途。不适合动物或人类食用。

For full product information, images and publications, please visit our [website](#).

## 產品图片

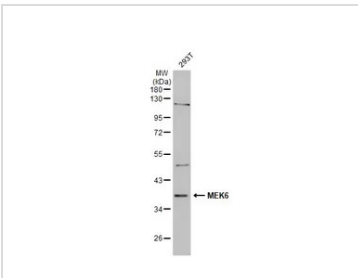
**GTX107445 IHC-P Image**

MEK6 antibody [N1C3] detects MEK6 protein at cytoplasm and nucleus in mouse duodenum by immunohistochemical analysis.

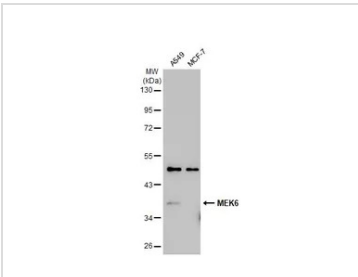
Sample: Paraffin-embedded mouse duodenum.

MEK6 antibody [N1C3] (GTX107445) diluted at 1:500.

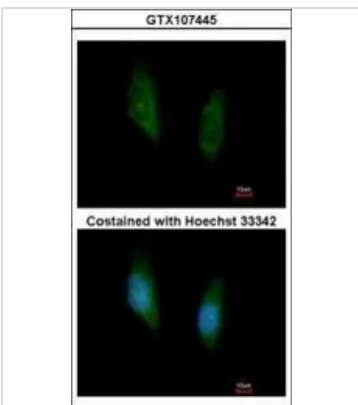
Antigen Retrieval: Citrate buffer, pH 6.0, 15 min

**GTX107445 WB Image**

Whole cell extract (30 µg) was separated by 10% SDS-PAGE, and the membrane was blotted with MEK6 antibody [N1C3] (GTX107445) diluted at 1:1000. The HRP-conjugated anti-rabbit IgG antibody (GTX213110-01) was used to detect the primary antibody.

**GTX107445 WB Image**

Various whole cell extracts (30 µg) were separated by 10% SDS-PAGE, and the membrane was blotted with MEK6 antibody [N1C3] (GTX107445) diluted at 1:1000. The HRP-conjugated anti-rabbit IgG antibody (GTX213110-01) was used to detect the primary antibody.

**GTX107445 ICC/IF Image**

Immunofluorescence analysis of methanol-fixed HeLa, using MEK6(GTX107445) antibody at 1:200 dilution.



For full product information, images and publications, please visit our [website](#).