

## Importin 13 antibody [C3], C-term

**Cat. No. GTX107982**

宿主	Rabbit
克隆	Polyclonal
同种型	IgG
实验应用	WB, IHC-P, IP
种属反应	Human, Rat

## 实验应用

## 应用说明

\*最佳稀释倍数与浓度应由研究人员确认

Suggested dilution	Recommended dilution
WB	1:500-1:3000
IHC-P	1:100-1:1000
IP	1:100-1:500

以下为常规应用缩写的中文注解

WB: 免疫印迹

ICC/IF: 细胞染色

IHC-P: 石蜡切片

IHC-Fr: 冰冻切片

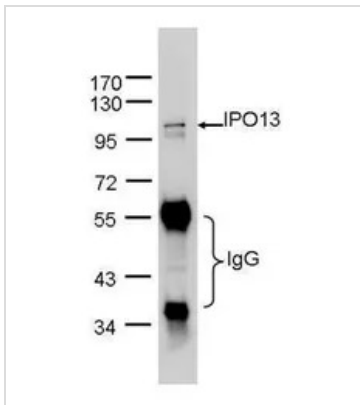
## 属性

形式	Liquid
存储溶液	0.1M Tris, 0.1M Glycine, 10% Glycerol
保存剂	0.01% Thimerosal
存放说明	Store as concentrated solution. Centrifuge briefly prior to opening vial. For short-term storage (1-2 weeks), store at 4°C. For long-term storage, aliquot and store at -20°C or below. Avoid multiple freeze-thaw cycles.
浓度	1.02 mg/ml (Please refer to the vial label for the specific concentration.)
偶联	Unconjugated
RRID	AB_1950595
注意事项	仅供实验室使用。不适用于人类或动物的任何临床, 治疗或诊断用途。不适合动物或人类食用。



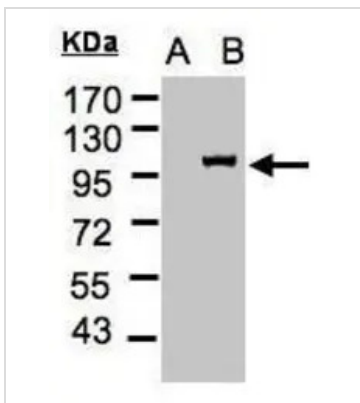
For full product information, images and publications, please visit our [website](#).

## 產品圖片

**GTX107982 IP Image**

IPO13 was immunoprecipitated from 1mg of HeLa whole cell lysate using 10 ug of anti-IPO13 antibody (GTX107982).

The precipitated IPO13 was detected by GTX107982 diluted at 1:1000.

**GTX107982 WB Image**

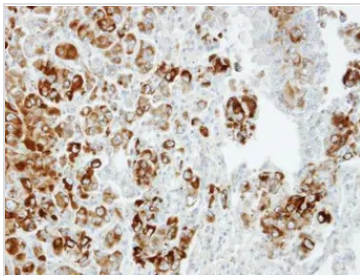
Western Blot analysis of IPO13 expression in transfected 293T cell line by IPO13 polyclonal antibody.

A: Non-transfected lysate.

B: IPO13 transfected lysate.

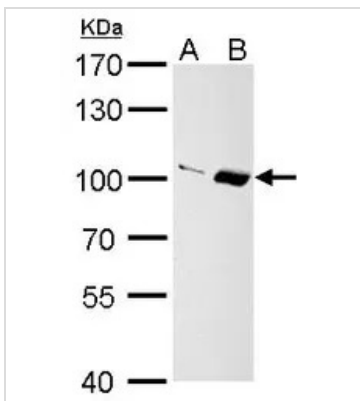
7.5% SDS PAGE

GTX107982 diluted at 1:500

**GTX107982 IHC-P Image**

Immunohistochemical analysis of paraffin-embedded CL1-5 xenograft, using Importin 13(GTX107982) antibody at 1:100 dilution.

Antigen Retrieval: Trilogy™ (EDTA based, pH 8.0) buffer, 15min

**GTX107982 WB Image**

Importin 13 antibody [C3], C-term detects Importin 13 protein by Western blot analysis.

A. 30 µg PC-12 whole cell lysate/extract

B. 30 µg Rat2 whole cell lysate/extract

7.5 % SDS-PAGE

Importin 13 antibody [C3], C-term (GTX107982) dilution: 1:1000



For full product information, images and publications, please visit our [website](#).