

Human PEX26 protein, His tag

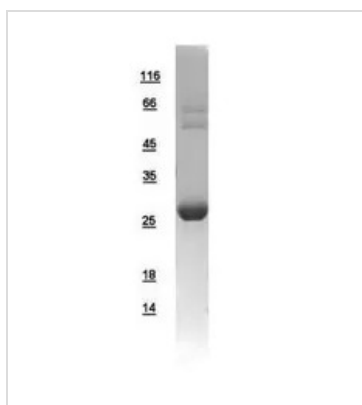
Cat. No. GTX109551-pro**Species** Human**Package**

100 µg, 25 µg

属性

形式 Liquid**存储溶液** PBS, 0.1% SDS**保存剂** No preservatives**存放说明** Store as concentrated solution. Centrifuge briefly prior to opening vial. Aliquot and store at -20°C or below. Avoid multiple freeze-thaw cycles.**浓度** Batch dependent (Please refer to the vial label for the specific concentration.)**Region/Sequence** N-terminal His tagged full length protein of NP_060399**表达系统** E. coli**纯度** >95%**偶联** Unconjugated**注意事项** For In vitro laboratory use only. Not for any clinical, therapeutic, or diagnostic use in humans or animals. Not for animal or human consumption.

產品图片

**GTX109551-pro Image**

10µg of GTX109551-pro PEX26 recombinant protein analyzed using SDS-PAGE and stained with coomassie blue and captured by black and white camera.



For full product information, images and publications, please visit our [website](#).