

## ELP4 antibody

Cat. No. GTX111748

宿主	Rabbit
克隆	Polyclonal
同种型	IgG
实验应用	WB, ICC/IF, IHC-P, IP
种属反应	Human

## 实验应用

## 应用说明

\*最佳稀释倍数与浓度应由研究人员确认

Suggested dilution	Recommended dilution
WB	1:500-1:3000
ICC/IF	1:100-1:1000
IHC-P	1:100-1:1000
IP	1:100-1:500

以下为常规应用缩写的中文注解

WB: 免疫印迹

ICC/IF: 细胞染色

IHC-P: 石蜡切片

IHC-Fr: 冰冻切片

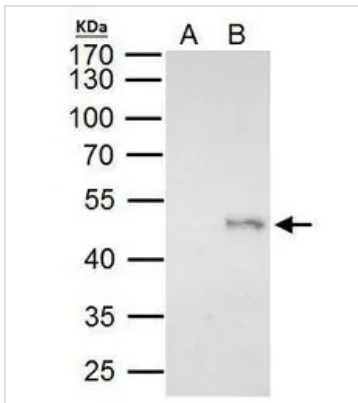
## 属性

形式	Liquid
存储溶液	0.1M Tris, 0.1M Glycine, 20% Glycerol
保存剂	0.01% Thimerosal
存放说明	Store as concentrated solution. Centrifuge briefly prior to opening vial. For short-term storage (1-2 weeks), store at 4°C. For long-term storage, aliquot and store at -20°C or below. Avoid multiple freeze-thaw cycles.
浓度	1 mg/ml (Please refer to the vial label for the specific concentration.)
偶联	Unconjugated
RRID	AB_10618449
注意事项	仅供实验室使用。不适用于人类或动物的任何临床，治疗或诊断用途。不适合动物或人类食用。



For full product information, images and publications, please visit our [website](#).

## 產品圖片

**GTX111748 IP Image**

ELP4 antibody immunoprecipitates ELP4 protein in IP experiments.

IP Sample: HeLa whole cell lysate/extract

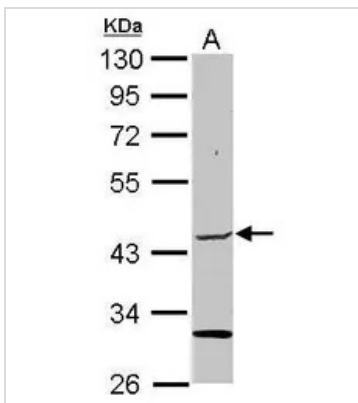
A. Control with 2  $\mu$ g of preimmune rabbit IgG

B. Immunoprecipitation of ELP4 protein by 2  $\mu$ g of ELP4 antibody (GTX111748)

10% SDS-PAGE

The immunoprecipitated ELP4 protein was detected by ELP4 antibody (GTX111748) diluted at 1:1000.

EasyBlot anti-rabbit IgG (GTX221666-01) was used as a secondary reagent.

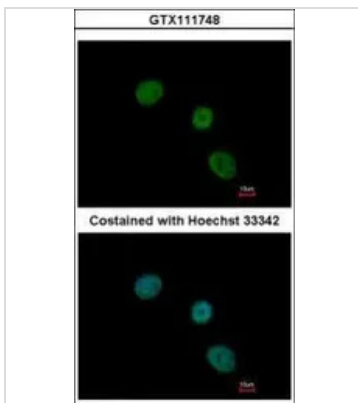
**GTX111748 WB Image**

Sample (30  $\mu$ g of whole cell lysate)

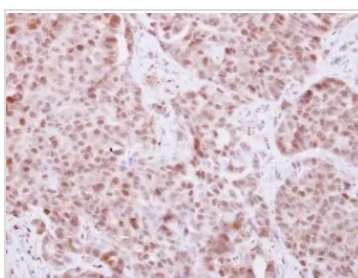
A: MCF-7

10% SDS PAGE

GTX111748 diluted at 1:1000

**GTX111748 ICC/IF Image**

Immunofluorescence analysis of paraformaldehyde-fixed MCF-7, using ELP4(GTX111748) antibody at 1:500 dilution.

**GTX111748 IHC-P Image**

Immunohistochemical analysis of paraffin-embedded human lung adenocarcinoma, using ELP4(GTX111748) antibody at 1:250 dilution.

Antigen Retrieval: Trilogy™ (EDTA based, pH 8.0) buffer, 15min



For full product information, images and publications, please visit our [website](#).