

GALK2 antibody

Cat. No. GTX111750

宿主	Rabbit
克隆	Polyclonal
同种型	IgG
实验应用	WB, ICC/IF, IHC-P
种属反应	Human, Mouse

实验应用

应用说明

*最佳稀释倍数与浓度应由研究人员确认

Suggested dilution	Recommended dilution
WB	1:1000-1:10000
ICC/IF	1:100-1:1000
IHC-P	1:100-1:1000

以下为常规应用缩写的中文注解

WB: 免疫印迹

ICC/IF: 细胞染色

IHC-P: 石蜡切片

IHC-Fr: 冰冻切片

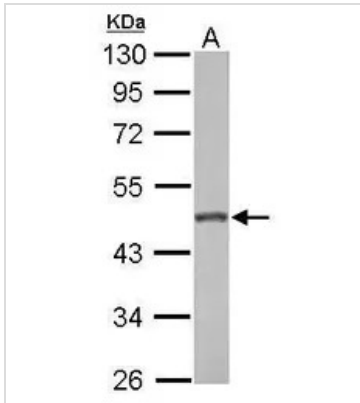
属性

形式	Liquid
存储溶液	0.1M Tris, 0.1M Glycine, 10% Glycerol
保存剂	0.01% Thimerosal
存放说明	Store as concentrated solution. Centrifuge briefly prior to opening vial. For short-term storage (1-2 weeks), store at 4°C. For long-term storage, aliquot and store at -20°C or below. Avoid multiple freeze-thaw cycles.
浓度	1 mg/ml (Please refer to the vial label for the specific concentration.)
偶联	Unconjugated
RRID	AB_1950330
注意事项	仅供实验室使用。不适用于人类或动物的任何临床, 治疗或诊断用途。不适合动物或人类食用。



For full product information, images and publications, please visit our [website](#).

產品圖片

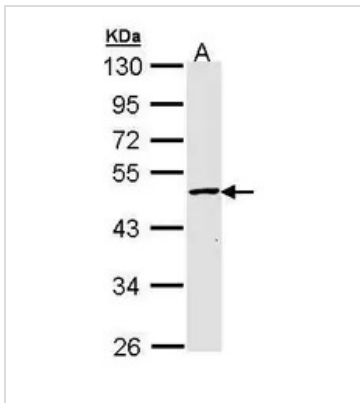
**GTX111750 WB Image**

GALK2 antibody detects GALK2 protein by Western blot analysis.

A. 50 μ g mouse kidney lysate/extract

10 % SDS-PAGE

GALK2 antibody (GTX111750) dilution: 1:1000

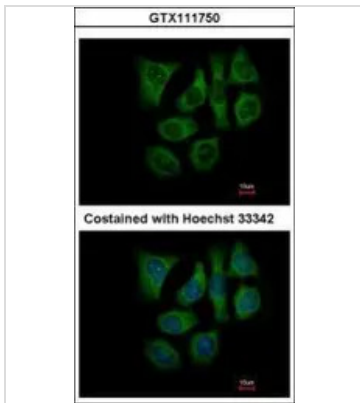
**GTX111750 WB Image**

Sample (30 ug of whole cell lysate)

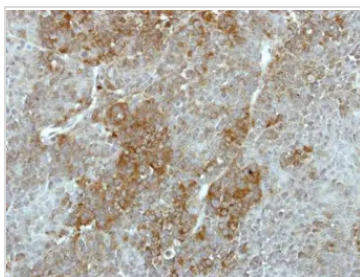
A: Hep G2 (GTX27900)

10% SDS PAGE

GTX111750 diluted at 1:5000

**GTX111750 ICC/IF Image**

Immunofluorescence analysis of methanol-fixed Hep3B, using GALK2(GTX111750) antibody at 1:500 dilution.

**GTX111750 IHC-P Image**

Immunohistochemical analysis of paraffin-embedded MCF7 xenograft, using GALK2(GTX111750) antibody at 1:500 dilution.

Antigen Retrieval: Citrate buffer, pH 6.0, 15 min



For full product information, images and publications, please visit our [website](#).