

## RGS1 antibody

Cat. No. GTX112803

宿主	Rabbit
克隆	Polyclonal
同种型	IgG
实验应用	WB, ICC/IF, IHC-P
种属反应	Human

引用文献 (2)

## 实验应用

## 应用说明

\*最佳稀释倍数与浓度应由研究人员确认

Suggested dilution	Recommended dilution
WB	1:500-1:3000
ICC/IF	Assay dependent
IHC-P	1:100-1:1000

以下为常规应用缩写的中文注解

WB: 免疫印迹

ICC/IF: 细胞染色

IHC-P: 石蜡切片

IHC-Fr: 冰冻切片

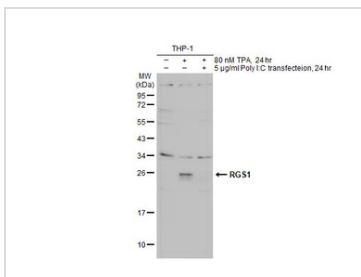
## 属性

形式	Liquid
存储溶液	PBS, 20% Glycerol
保存剂	0.025% ProClin 300
存放说明	Store as concentrated solution. Centrifuge briefly prior to opening vial. For short-term storage (1-2 weeks), store at 4°C. For long-term storage, aliquot and store at -20°C or below. Avoid multiple freeze-thaw cycles.
浓度	0.57 mg/ml (Please refer to the vial label for the specific concentration.)
偶联	Unconjugated
RRID	AB_11178048
注意事项	仅供实验室使用。不适用于人类或动物的任何临床, 治疗或诊断用途。不适合动物或人类食用。



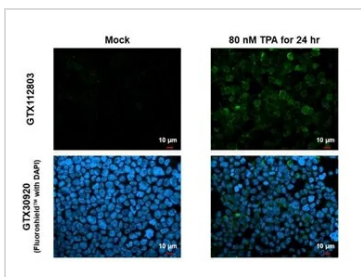
For full product information, images and publications, please visit our [website](#).

產品圖片



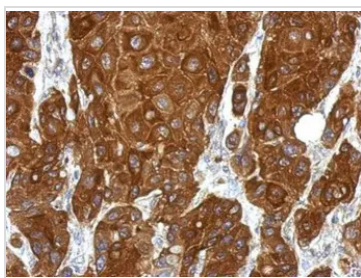
**GTX112803 WB Image**

Untreated (-) and treated (+) THP-1 whole cell extract (30 µg) were separated by 12% SDS-PAGE, and the membrane was blotted with RGS1 antibody (GTX112803) diluted at 1:1000. The HRP-conjugated anti-rabbit IgG antibody (GTX213110-01) was used to detect the primary antibody.



**GTX112803 ICC/IF Image**

RGS1 antibody detects RGS1 protein at cell membrane by immunofluorescent analysis. Sample: Mock and treated THP-1 cells were fixed in 4% paraformaldehyde at RT for 15 min. Green: RGS1 stained by RGS1 antibody (GTX112803) diluted at 1:500. Blue: Fluoroshield with DAPI (GTX30920).



**GTX112803 IHC-P Image**

Immunohistochemical analysis of paraffin-embedded Cal27 xenograft, using RGS1(GTX112803) antibody at 1:500 dilution. Antigen Retrieval: Trilogy™ (EDTA based, pH 8.0) buffer, 15min



For full product information, images and publications, please visit our [website](#).