

beta Tubulin antibody [D66]

Cat. No. GTX11307

宿主	Mouse
克隆	Monoclonal
同种型	IgG1
实验应用	WB, ICC/IF, IP, ELISA
种属反应	Human, Mouse, Rat, Rabbit, Bovine, Dog, Hamster, Chicken, Monkey, Chlamydomonas reinhardtii, Dinoflagellate, Sea Urchin

引用文献 (4)

实验应用

应用说明

*最佳稀释倍数与浓度应由研究人员确认

Suggested dilution	Recommended dilution
WB	0.5-1.0 µg/ml
ICC/IF	Assay dependent
IP	Assay dependent
ELISA	Assay dependent

以下为常规应用缩写的中文注解

WB: 免疫印迹

ICC/IF: 细胞染色

IHC-P: 石蜡切片

IHC-Fr: 冰冻切片

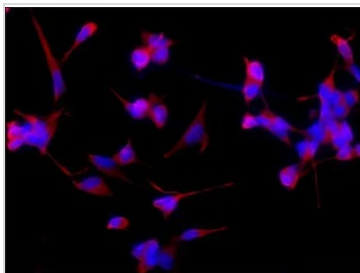
属性

形式	Liquid
存储溶液	PBS, 1% BSA
保存剂	15mM Sodium azide
存放说明	Store as concentrated solution. Centrifuge briefly prior to opening vial. For short-term storage (1-2 weeks), store at 4°C. For long-term storage, aliquot and store at -20°C or below. Avoid multiple freeze-thaw cycles.
浓度	~1? mg/ml (Please refer to the vial label for the specific concentration.)
偶联	Unconjugated
RRID	AB_372176
注意事项	仅供实验室使用。不适用于人类或动物的任何临床, 治疗或诊断用途。不适合动物或人类食用。



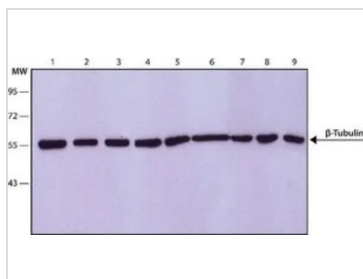
For full product information, images and publications, please visit our [website](#).

產品圖片



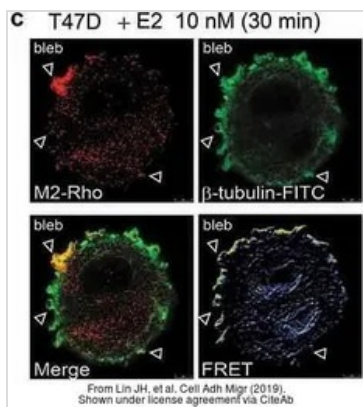
GTX11307 ICC/IF Image

ICC/IF analysis of SH-SY-5Y cells using GTX11307 beta Tubulin antibody [D66] at 0.5 µg/mL (red) with DAPI (blue). Cells were fixed and permeabilized with methanol followed by methanol:acetone.



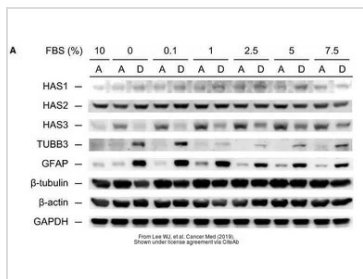
GTX11307 WB Image

WB analysis of (1) HeLa, (2) U87, (3) P19, (4) Neuro-2a, (5) PC-12, (6) COS-7, (7) CHO, (8) MDBK and (9) MDCK lysates using beta Tubulin antibody [D66] at of 1 µg/ml.



GTX11307 ICC/IF Image

The data was published in the journal Cell Adh Migr in 2019. [PMID: 30744493](https://pubmed.ncbi.nlm.nih.gov/30744493/)



GTX11307 WB Image

The data was published in the journal Cancer Med in 2019. [PMID: 31274246](https://pubmed.ncbi.nlm.nih.gov/31274246/)



For full product information, images and publications, please visit our [website](http://www.genetex.com).