

RGS13 antibody [N1C3]

Cat. No. GTX113540

宿主	Rabbit
克隆	Polyclonal
同种型	IgG
实验应用	WB, ICC/IF, IHC-Fr
种属反应	Human, Mouse

引用文献 (1)

实验应用

应用说明

*最佳稀释倍数与浓度应由研究人员确认

Suggested dilution	Recommended dilution
WB	1:500-1:3000
ICC/IF	1:100-1:1000
IHC-Fr	Assay dependent

以下为常规应用缩写的中文注解

WB: 免疫印迹

ICC/IF: 细胞染色

IHC-P: 石蜡切片

IHC-Fr: 冰冻切片

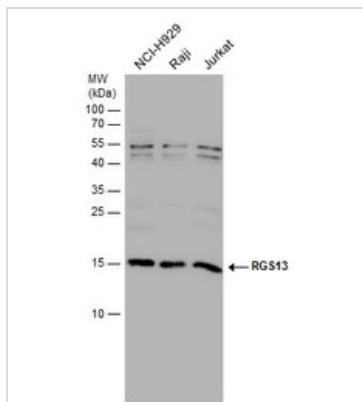
属性

形式	Liquid
存储溶液	0.1M Tris, 0.1M Glycine, 10% Glycerol
保存剂	0.01% Thimerosal
存放说明	Store as concentrated solution. Centrifuge briefly prior to opening vial. For short-term storage (1-2 weeks), store at 4°C. For long-term storage, aliquot and store at -20°C or below. Avoid multiple freeze-thaw cycles.
浓度	1 mg/ml (Please refer to the vial label for the specific concentration.)
偶联	Unconjugated
RRID	AB_2037873
注意事项	仅供实验室使用。不适用于人类或动物的任何临床, 治疗或诊断用途。不适合动物或人类食用。



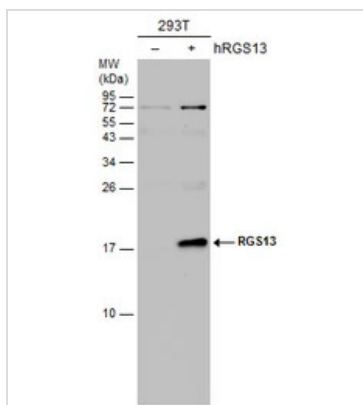
For full product information, images and publications, please visit our [website](#).

產品圖片



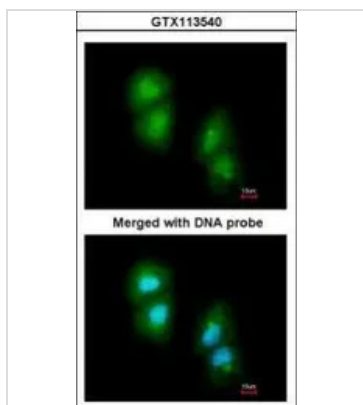
GTX113540 WB Image

Various whole cell extracts (30 µg) were separated by 15% SDS-PAGE, and the membrane was blotted with RGS13 antibody [N1C3] (GTX113540) diluted at 1:1000.



GTX113540 WB Image

Non-transfected (-) and transfected (+) 293T whole cell extracts (30 µg) were separated by 15% SDS-PAGE, and the membrane was blotted with RGS13 antibody [N1C3] (GTX113540) diluted at 1:1000. The signal was developed with Trident ECL plus-Enhanced.



GTX113540 ICC/IF Image

Immunofluorescence analysis of paraformaldehyde-fixed A549, using RGS13(GTX113540) antibody at 1:200 dilution.



For full product information, images and publications, please visit our [website](#).