

Rhotekin antibody

Cat. No. GTX114161

宿主	Rabbit
克隆	Polyclonal
同种型	IgG
实验应用	WB, ICC/IF
种属反应	Human, Mouse

引用文献 (1)

实验应用

应用说明

*最佳稀释倍数与浓度应由研究人员确认

Suggested dilution	Recommended dilution
WB	1:1000-1:10000
ICC/IF	1:100-1:1000

Note : suggest to fix with methanol, not recommend to fix with PFA

以下为常规应用缩写的中文注解

WB: 免疫印迹

ICC/IF: 细胞染色

IHC-P: 石蜡切片

IHC-Fr: 冰冻切片

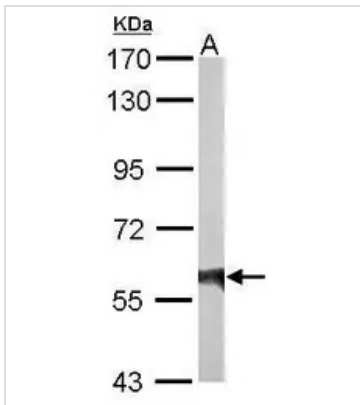
属性

形式	Liquid
存储溶液	0.1M Tris, 0.1M Glycine, 20% Glycerol
保存剂	0.01% Thimerosal
存放说明	Store as concentrated solution. Centrifuge briefly prior to opening vial. For short-term storage (1-2 weeks), store at 4°C. For long-term storage, aliquot and store at -20°C or below. Avoid multiple freeze-thaw cycles.
浓度	0.54 mg/ml (Please refer to the vial label for the specific concentration.)
偶联	Unconjugated
RRID	AB_10619542
注意事项	仅供实验室使用。不适用于人类或动物的任何临床, 治疗或诊断用途。不适合动物或人类食用。



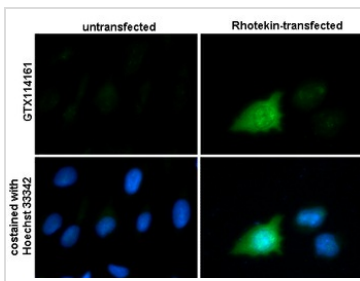
For full product information, images and publications, please visit our [website](#).

產品圖片



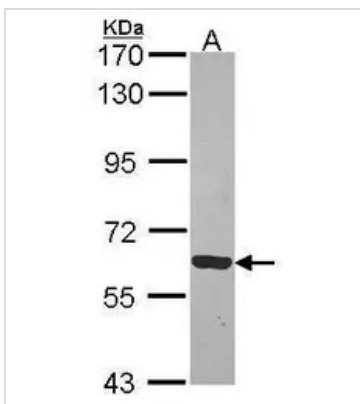
GTX114161 WB Image

Sample (20 ug of whole cell lysate)
 A: mouse brain
 7.5% SDS PAGE
 GTX114161 diluted at 1:10000



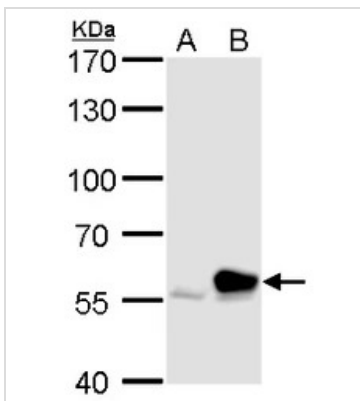
GTX114161 ICC/IF Image

Rhotekin antibody detects Rhotekin protein at cytoplasm by immunofluorescent analysis.
 Sample: Rhotekin-transfected (right) or untransfected (left) HeLa cells were fixed in ice-cold MeOH for 5 min.
 Green: Rhotekin protein stained by Rhotekin antibody (GTX114161) diluted at 1:500.
 Blue: Hoechst 33342 staining.



GTX114161 WB Image

Sample (30 ug of whole cell lysate)
 A: JurKat
 7.5% SDS PAGE
 Rhotekin antibody
 GTX114161 diluted at 1:1000



GTX114161 WB Image

Rhotekin antibody detects Rhotekin protein by western blot analysis.
 A. 30 µg 293T whole cell lysate/extract
 B. 30 µg whole cell lysate/extract of human Rhotekin-transfected 293T cells
 7.5 % SDS-PAGE
 Rhotekin antibody (GTX114161) dilution: 1:5000



For full product information, images and publications, please visit our [website](#).