

NNT1 antibody

Cat. No. GTX114173

宿主	Rabbit
克隆	Polyclonal
同种型	IgG
实验应用	WB, ICC/IF, IHC-P
种属反应	Human

实验应用

应用说明

*最佳稀释倍数与浓度应由研究人员确认

Suggested dilution	Recommended dilution
WB	1:1000-1:10000
ICC/IF	1:100-1:1000
IHC-P	1:100-1:1000

以下为常规应用缩写的中文注解

WB: 免疫印迹

ICC/IF: 细胞染色

IHC-P: 石蜡切片

IHC-Fr: 冰冻切片

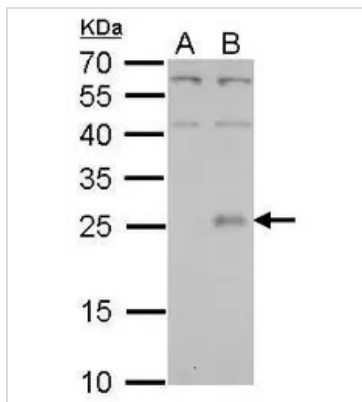
属性

形式	Liquid
存储溶液	0.1M Tris, 0.1M Glycine, 20% Glycerol
保存剂	0.01% Thimerosal
存放说明	Store as concentrated solution. Centrifuge briefly prior to opening vial. For short-term storage (1-2 weeks), store at 4°C. For long-term storage, aliquot and store at -20°C or below. Avoid multiple freeze-thaw cycles.
浓度	1 mg/ml (Please refer to the vial label for the specific concentration.)
偶联	Unconjugated
RRID	AB_10620783
注意事项	仅供实验室使用。不适用于人类或动物的任何临床, 治疗或诊断用途。不适合动物或人类食用。



For full product information, images and publications, please visit our [website](#).

產品圖片

**GTX114173 WB Image**

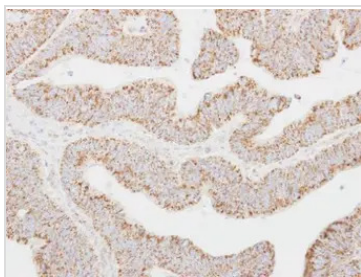
NNT-1/BSF-3 antibody detects CLCF1 protein by Western blot analysis.

A. 30 µg 293T whole cell lysate/extract

B. 30 µg whole cell lysate/extract of human CLCF1-transfected 293T cells

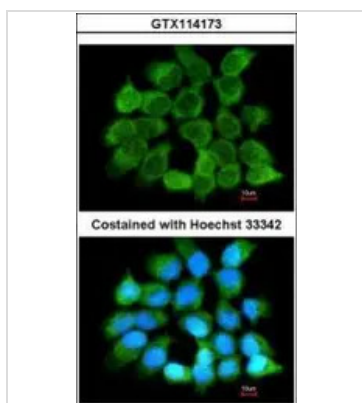
12 % SDS-PAGE

NNT-1/BSF-3 antibody (GTX114173) dilution: 1:5000

**GTX114173 IHC-P Image**

Immunohistochemical analysis of paraffin-embedded human colon carcinoma, using NNT-1/BSF-3(GTX114173) antibody at 1:250 dilution.

Antigen Retrieval: Trilogy™ (EDTA based, pH 8.0) buffer, 15min

**GTX114173 ICC/IF Image**

Immunofluorescence analysis of methanol-fixed A431, using NNT1(GTX114173) antibody at 1:200 dilution.



For full product information, images and publications, please visit our [website](#).