

FGD1 antibody

Cat. No. GTX114404

| | |
|------|------------|
| 宿主 | Rabbit |
| 克隆 | Polyclonal |
| 同种型 | IgG |
| 实验应用 | WB |
| 种属反应 | Human |

引用文献 (1)

实验应用

应用说明

*最佳稀释倍数与浓度应由研究人员确认

| Suggested dilution | Recommended dilution |
|--------------------|----------------------|
|--------------------|----------------------|

| | |
|----|--------------|
| WB | 1:500-1:3000 |
|----|--------------|

以下为常规应用缩写的中文注解

WB: 免疫印迹

ICC/IF: 细胞染色

IHC-P: 石蜡切片

IHC-Fr: 冰冻切片

属性

| | |
|----|--------|
| 形式 | Liquid |
|----|--------|

| | |
|------|---------------------------------------|
| 存储溶液 | 0.1M Tris, 0.1M Glycine, 20% Glycerol |
|------|---------------------------------------|

| | |
|-----|------------------|
| 保存剂 | 0.01% Thimerosal |
|-----|------------------|

| | |
|------|--|
| 存放说明 | Store as concentrated solution. Centrifuge briefly prior to opening vial. For short-term storage (1-2 weeks), store at 4°C. For long-term storage, aliquot and store at -20°C or below. Avoid multiple freeze-thaw cycles. |
|------|--|

| | |
|----|---|
| 浓度 | 0.85 mg/ml (Please refer to the vial label for the specific concentration.) |
|----|---|

| | |
|----|--------------|
| 偶联 | Unconjugated |
|----|--------------|

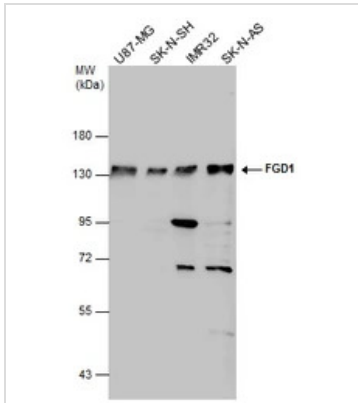
| | |
|------|-------------|
| RRID | AB_10619781 |
|------|-------------|

| | |
|------|--|
| 注意事项 | 仅供实验室使用。不适用于人类或动物的任何临床，治疗或诊断用途。不适合动物或人类食用。 |
|------|--|



For full product information, images and publications, please visit our [website](#).

產品圖片

**GTX114404 WB Image**

Various whole cell extracts (30 μ g) were separated by 7.5% SDS-PAGE, and the membrane was blotted with FGD1 antibody (GTX114404) diluted at 1:500.



For full product information, images and publications, please visit our [website](#).