

## MRPL12 antibody [N1C3]

Cat. No. GTX114731

宿主	Rabbit
克隆	Polyclonal
同种型	IgG
实验应用	WB, ICC/IF, IHC-P, PLA
种属反应	Human, Mouse

引用文献 (2)

## 实验应用

## 应用说明

\*最佳稀释倍数与浓度应由研究人员确认

Suggested dilution	Recommended dilution
WB	1:500-1:3000
ICC/IF	1:100-1:1000
IHC-P	1:100-1:1000
PLA	Assay dependent

以下为常规应用缩写的中文注解

WB: 免疫印迹

ICC/IF: 细胞染色

IHC-P: 石蜡切片

IHC-Fr: 冰冻切片

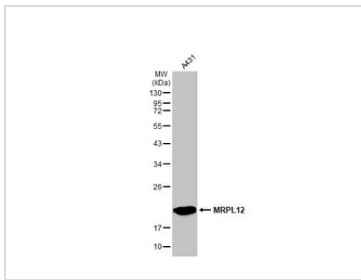
## 属性

形式	Liquid
存储溶液	0.1M Tris, 0.1M Glycine, 20% Glycerol
保存剂	0.01% Thimerosal
存放说明	Store as concentrated solution. Centrifuge briefly prior to opening vial. For short-term storage (1-2 weeks), store at 4°C. For long-term storage, aliquot and store at -20°C or below. Avoid multiple freeze-thaw cycles.
浓度	0.56 mg/ml (Please refer to the vial label for the specific concentration.)
偶联	Unconjugated
RRID	AB_10619823
注意事项	仅供实验室使用。不适用于人类或动物的任何临床、治疗或诊断用途。不适合动物或人类食用。



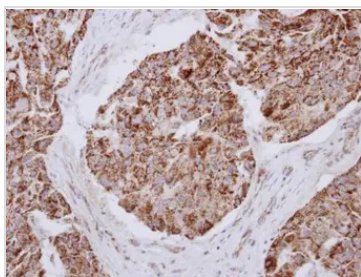
For full product information, images and publications, please visit our [website](#).

產品圖片



**GTX114731 WB Image**

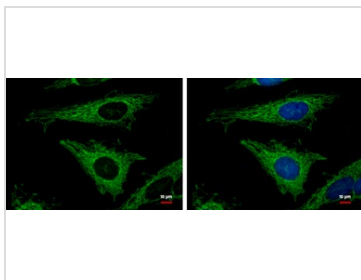
Whole cell extract (30 µg) was separated by 12% SDS-PAGE, and the membrane was blotted with MRPL12 antibody [N1C3] (GTX114731) diluted at 1:1000. The HRP-conjugated anti-rabbit IgG antibody (GTX213110-01) was used to detect the primary antibody.



**GTX114731 IHC-P Image**

Immunohistochemical analysis of paraffin-embedded human breast cancer, using MRPL12(GTX114731) antibody at 1:250 dilution.

Antigen Retrieval: Trilogy™ (EDTA based, pH 8.0) buffer, 15min



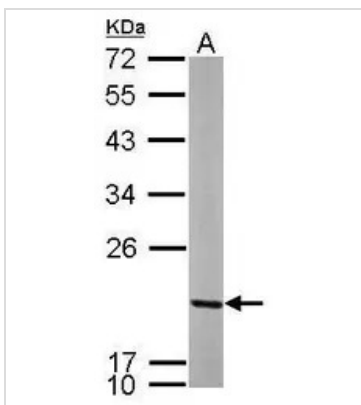
**GTX114731 ICC/IF Image**

MRPL12 antibody [N1C3] detects MRPL12 protein at mitochondria by immunofluorescent analysis.

Sample: HeLa cells were fixed in 2% paraformaldehyde/culture medium at 37°C for 30 min.

Green: MRPL12 protein stained by MRPL12 antibody [N1C3] (GTX114731) diluted at 1:500.

Blue: Hoechst 33342 staining.



**GTX114731 WB Image**

Sample (50 ug of whole cell lysate)

A: mouse brain

12% SDS PAGE

GTX114731 diluted at 1:1000



For full product information, images and publications, please visit our [website](#).