

Calcitonin antibody [13B9]

Cat. No. GTX11484

宿主	Mouse
克隆	Monoclonal
同种型	IgG2a
实验应用	WB, ELISA, Sandwich ELISA
种属反应	Human

实验应用

应用说明

*最佳稀释倍数与浓度应由研究人员确认

Suggested dilution	Recommended dilution
WB	Assay dependent
ELISA	Assay dependent
Sandwich ELISA	Assay dependent

Note : Capture : GTX11497, Detection : GTX11484

以下为常规应用缩写的中文注解

WB: 免疫印迹

ICC/IF: 细胞染色

IHC-P: 石蜡切片

IHC-Fr: 冰冻切片

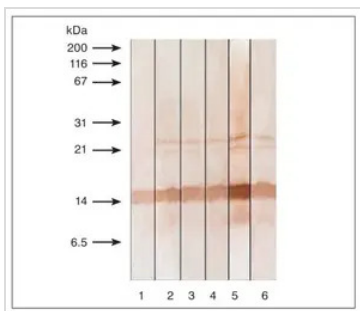
属性

形式	Liquid
存储溶液	PBS
保存剂	0.09% Sodium azide
存放说明	Store as concentrated solution. Centrifuge briefly prior to opening vial. Store at 4°C.
浓度	Batch dependent (Please refer to the vial label for the specific concentration.)
偶联	Unconjugated
注意事项	仅供实验室使用。不适用于人类或动物的任何临床、治疗或诊断用途。不适合动物或人类食用。

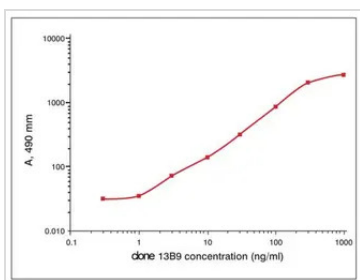


For full product information, images and publications, please visit our [website](#).

產品圖片

**GTX11484 WB Image**

Detection of human recombinant PCT in Western blotting by monoclonal antibodies specific to calcitonin following 15% SDS-PAGE in reducing conditions. Antigen loaded - 100 ng/lane; Lane 1: Calcitonin antibody [13B9] (GTX11484); Lane 2: Calcitonin antibody [13F2] (GTX14818); Lane 3: Calcitonin antibody [13G11] (GTX14819); Lane 4: Calcitonin antibody [14A2] (GTX11496); Lane 5: Calcitonin antibody [16B5] (GTX11493); Lane 6: Calcitonin antibody [24B2] (GTX11497)

**GTX11484 ELISA Image**

Titration curve of Calcitonin antibody [13B9] (GTX11484) in indirect ELISA. Antigen: Calcitonin human recombinant - 0.02 ug/well



For full product information, images and publications, please visit our [website](#).