

SFRS14 antibody

Cat. No. GTX115357

| | |
|------|------------|
| 宿主 | Rabbit |
| 克隆 | Polyclonal |
| 同种型 | IgG |
| 实验应用 | WB, IP |
| 种属反应 | Human |

实验应用

应用说明

*最佳稀释倍数与浓度应由研究人员确认

| Suggested dilution | Recommended dilution |
|--------------------|----------------------|
| WB | 1:500-1:3000 |
| IP | 1:100-1:500 |

以下为常规应用缩写的中文注解

WB: 免疫印迹

ICC/IF: 细胞染色

IHC-P: 石蜡切片

IHC-Fr: 冰冻切片

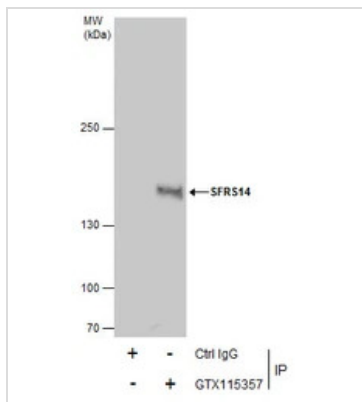
属性

| | |
|------|--|
| 形式 | Liquid |
| 存储溶液 | PBS, 20% Glycerol |
| 保存剂 | 0.01% Thimerosal |
| 存放说明 | Store as concentrated solution. Centrifuge briefly prior to opening vial. For short-term storage (1-2 weeks), store at 4°C. For long-term storage, aliquot and store at -20°C or below. Avoid multiple freeze-thaw cycles. |
| 浓度 | 1 mg/ml (Please refer to the vial label for the specific concentration.) |
| 偶联 | Unconjugated |
| RRID | AB_2885357 |
| 注意事项 | 仅供实验室使用。不适用于人类或动物的任何临床, 治疗或诊断用途。不适合动物或人类食用。 |



For full product information, images and publications, please visit our [website](#).

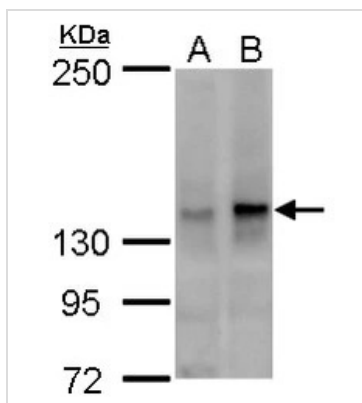
產品圖片

**GTX115357 IP Image**

Immunoprecipitation of SFRS14 protein from HeLa whole cell extracts using 5 μ g of SFRS14 antibody (GTX115357).

Western blot analysis was performed using SFRS14 antibody (GTX115357).

EasyBlot anti-Rabbit IgG (GTX221666-01) was used as a secondary reagent.

**GTX115357 WB Image**

SFRS14 antibody detects SFRS14 protein by western blot analysis.

A. 30 μ g HeLa whole cell lysate/extract

B. 30 μ g HeLa nuclear lysate/extract

5 % SDS-PAGE

SFRS14 antibody (GTX115357) dilution: 1:500



For full product information, images and publications, please visit our [website](#).