

NCKAP1 antibody [N1N2], N-term

Cat. No. GTX115481

宿主	Rabbit
克隆	Polyclonal
同种型	IgG
实验应用	WB, IHC-P, IHC-Fr
种属反应	Human, Mouse, Rat

实验应用

应用说明

*最佳稀释倍数与浓度应由研究人员确认

Suggested dilution	Recommended dilution
WB	1:500-1:3000
IHC-P	1:100-1:1000
IHC-Fr	1:100-1:1000

以下为常规应用缩写的中文注解

WB: 免疫印迹

ICC/IF: 细胞染色

IHC-P: 石蜡切片

IHC-Fr: 冰冻切片

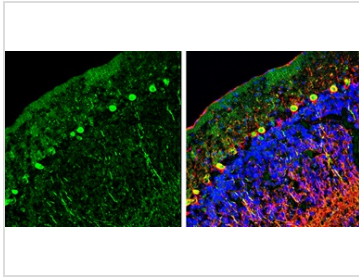
属性

形式	Liquid
存储溶液	PBS, 1% BSA, 20% Glycerol
保存剂	0.025% ProClin 300
存放说明	Store as concentrated solution. Centrifuge briefly prior to opening vial. For short-term storage (1-2 weeks), store at 4°C. For long-term storage, aliquot and store at -20°C or below. Avoid multiple freeze-thaw cycles.
浓度	0.36 mg/ml (Please refer to the vial label for the specific concentration.)
偶联	Unconjugated
RRID	AB_11165778
注意事项	仅供实验室使用。不适用于人类或动物的任何临床, 治疗或诊断用途。不适合动物或人类食用。



For full product information, images and publications, please visit our [website](#).

產品圖片

**GTX115481 IHC-Fr Image**

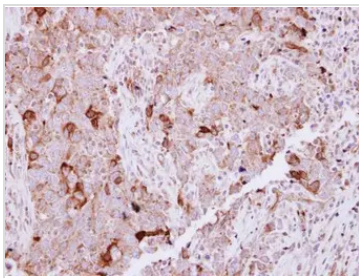
NCKAP1 antibody [N1N2], N-term detects NCKAP1 protein by immunohistochemical analysis.

Sample: Frozen-sectioned mouse cerebellum.

Green: NCKAP1 stained by NCKAP1 antibody [N1N2], N-term (GTX115481) diluted at 1:250.

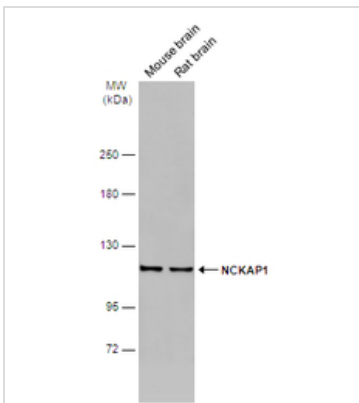
Red: NF-H, stained by NF-H antibody [GT114] (GTX634289) diluted at 1:500.

Blue: Fluoroshield with DAPI (GTX30920).

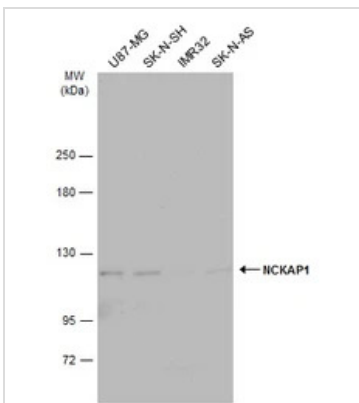
**GTX115481 IHC-P Image**

Immunohistochemical analysis of paraffin-embedded human lung Papillary adenocarcinoma, using NCKAP1(GTX115481) antibody at 1:250 dilution.

Antigen Retrieval: Trilogy™ (EDTA based, pH 8.0) buffer, 15min

**GTX115481 WB Image**

Various tissue extracts (50 μ g) were separated by 5% SDS-PAGE, and the membrane was blotted with NCKAP1 antibody [N1N2], N-term (GTX115481) diluted at 1:1000. The HRP-conjugated anti-rabbit IgG antibody (GTX213110-01) was used to detect the primary antibody.

**GTX115481 WB Image**

Various whole cell extracts (30 μ g) were separated by 5% SDS-PAGE, and the membrane was blotted with NCKAP1 antibody [N1N2], N-term (GTX115481) diluted at 1:1000. The HRP-conjugated anti-rabbit IgG antibody (GTX213110-01) was used to detect the primary antibody.



For full product information, images and publications, please visit our [website](#).