

FGFR1OP2 antibody

Cat. No. GTX117894

| | |
|------|-------------------|
| 宿主 | Rabbit |
| 克隆 | Polyclonal |
| 同种型 | IgG |
| 实验应用 | WB, ICC/IF, IHC-P |
| 种属反应 | Human, Mouse |

实验应用

应用说明

*最佳稀释倍数与浓度应由研究人员确认

| Suggested dilution | Recommended dilution |
|--------------------|----------------------|
| WB | 1:500-1:3000 |
| ICC/IF | 1:100-1:1000 |
| IHC-P | 1:100-1:1000 |

以下为常规应用缩写的中文注解

WB: 免疫印迹

ICC/IF: 细胞染色

IHC-P: 石蜡切片

IHC-Fr: 冰冻切片

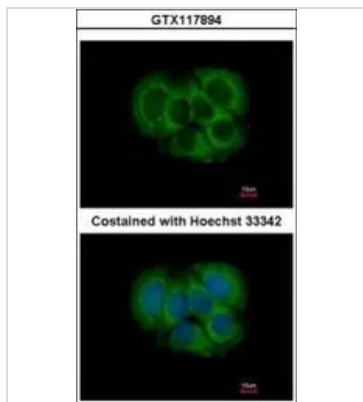
属性

| | |
|------|--|
| 形式 | Liquid |
| 存储溶液 | 0.1M Tris, 0.1M Glycine, 20% Glycerol |
| 保存剂 | 0.01% Thimerosal |
| 存放说明 | Store as concentrated solution. Centrifuge briefly prior to opening vial. For short-term storage (1-2 weeks), store at 4°C. For long-term storage, aliquot and store at -20°C or below. Avoid multiple freeze-thaw cycles. |
| 浓度 | 1 mg/ml (Please refer to the vial label for the specific concentration.) |
| 偶联 | Unconjugated |
| RRID | AB_10720770 |
| 注意事项 | 仅供实验室使用。不适用于人类或动物的任何临床, 治疗或诊断用途。不适合动物或人类食用。 |



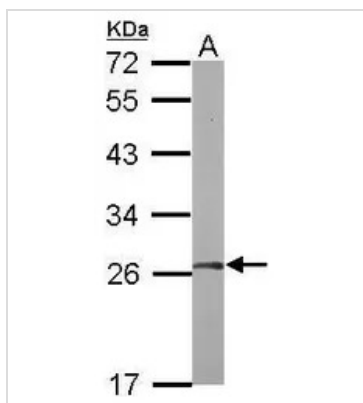
For full product information, images and publications, please visit our [website](#).

產品圖片



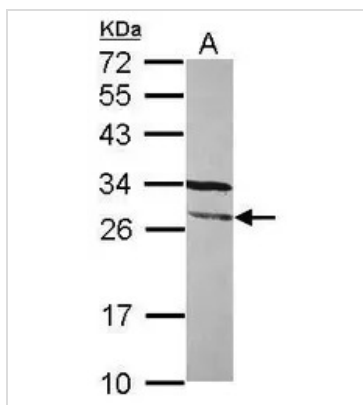
GTX117894 ICC/IF Image

Immunofluorescence analysis of methanol-fixed MCF-7, using FGFR1OP2(GTX117894) antibody at 1:500 dilution.



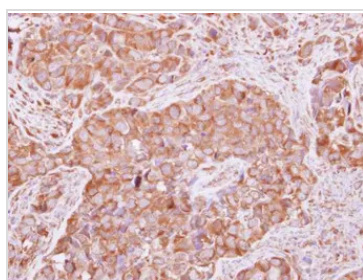
GTX117894 WB Image

Sample (50 ug of whole cell lysate)
A: mouse stomach
12% SDS PAGE
GTX117894 diluted at 1:1000



GTX117894 WB Image

Sample (30 ug of whole cell lysate)
A: MCF-7
12% SDS PAGE
GTX117894 diluted at 1:2000



GTX117894 IHC-P Image

Immunohistochemical analysis of paraffin-embedded H441 xenograft, using FGFR1OP2(GTX117894) antibody at 1:500 dilution.
Antigen Retrieval: Citrate buffer, pH 6.0, 15 min



For full product information, images and publications, please visit our [website](#).